

## DWK.O.10.80.37.5.0D Grundfos pump 96922649




Thank you for your interest in our products. Please contact us for more information, or visit our website

<https://www.lenntech.com/grundfos/DWK000/96922649/DWK-O-10-80-37-5-0D.html>

[info@lenntech.com](mailto:info@lenntech.com)

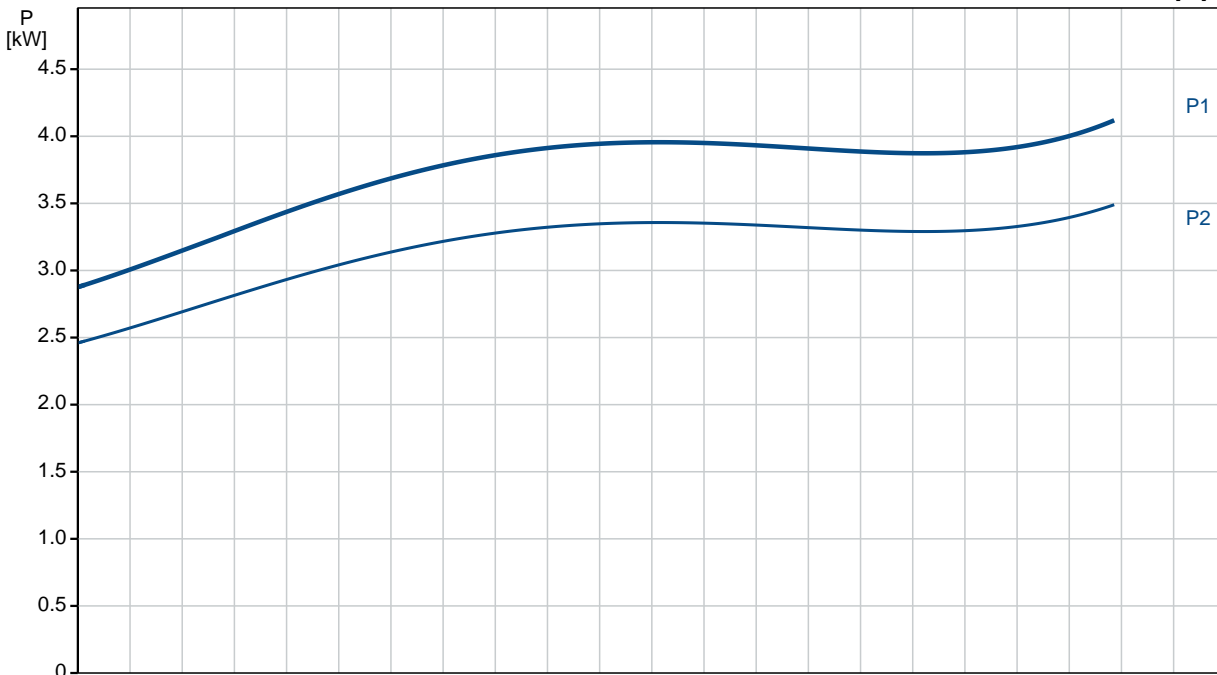
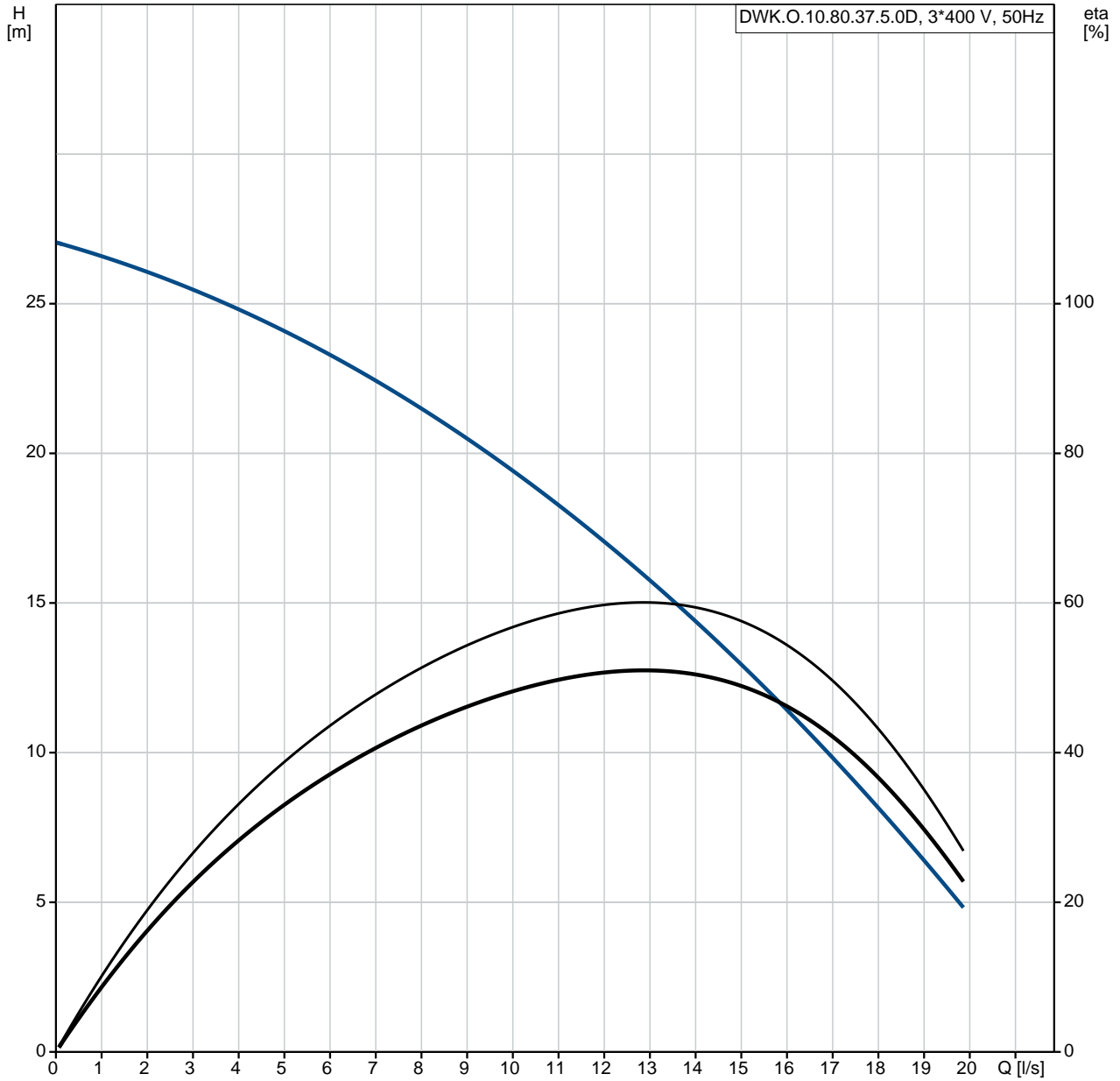
tel. +31 152 610 900

fax. +31 152 616 289

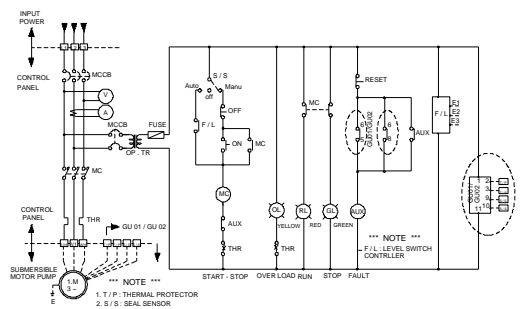
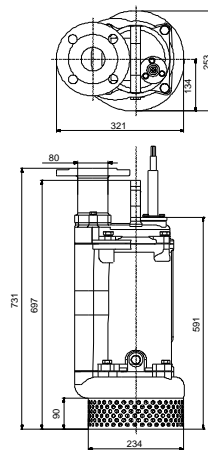
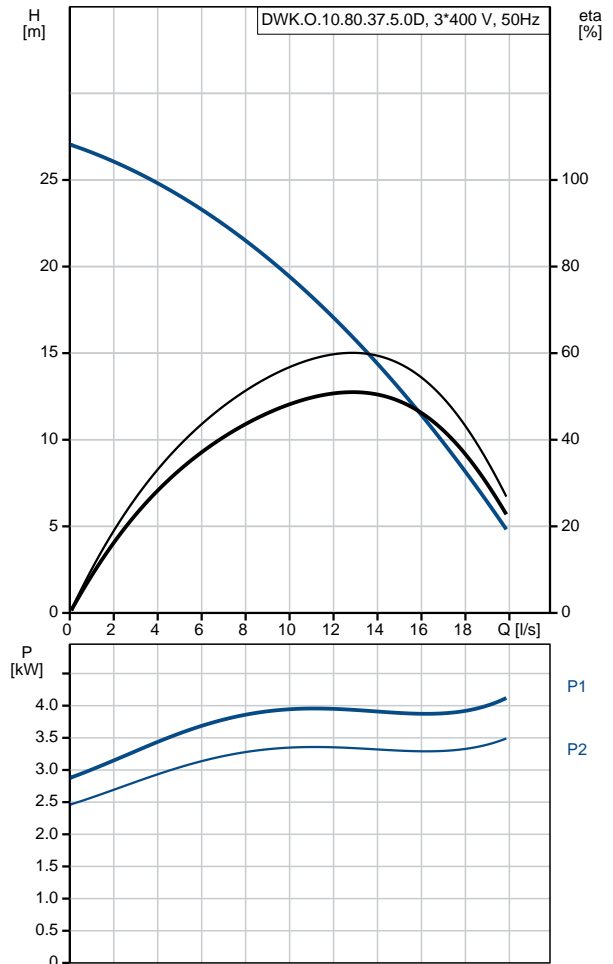
Position	Qty.	Description																																		
	1	<p data-bbox="323 163 571 197"><b>DWK.O.10.80.37.5.0D</b></p>  <p data-bbox="323 483 600 517">Product No.: On request</p> <p data-bbox="323 544 655 577">Submersible Contractor Pump</p> <p data-bbox="323 604 1270 638">Grundfos DWK pump is a submersible pump for dewatering and drainage applications.</p> <p data-bbox="323 665 879 784">The pump is suitable for pumping          -large quantities of underground and surface water          -drainage water at high head          -water with dirt from drainage pits</p> <p data-bbox="323 810 1342 844">The compact design makes the pump suitable for both temporary and permanent installation.</p> <p data-bbox="323 871 1449 927">The pump is cast iron, with vertical discharge port and integrated submersible 3-phase totally enclosed motor in insulation class F (155°C).</p> <p data-bbox="323 954 1214 987">The pump has a rise pipe, a double mechanical seal and semi-open impeller type</p> <p data-bbox="323 1014 1433 1048">The pump is equipped with a temperature bi-metal sensor for motor protection in case of overheating.</p> <p data-bbox="323 1075 1078 1108">The pump is fitted with suction strainer, lifting handle and 10 m cable.</p> <p data-bbox="323 1167 432 1200"><b>Controls:</b></p> <table data-bbox="323 1200 703 1227"> <tr> <td>Seal sensor:</td> <td>N</td> </tr> </table> <p data-bbox="323 1254 405 1288"><b>Liquid:</b></p> <table data-bbox="323 1288 815 1346"> <tr> <td>Liquid temperature range:</td> <td>0 .. 40 °C</td> </tr> <tr> <td>Density:</td> <td>998.2 kg/m<sup>3</sup></td> </tr> </table> <p data-bbox="323 1373 445 1406"><b>Technical:</b></p> <table data-bbox="323 1406 914 1615"> <tr> <td>Actual impeller diameter:</td> <td>155 mm</td> </tr> <tr> <td>Type of impeller:</td> <td>O</td> </tr> <tr> <td>Maximum particle size:</td> <td>10 mm</td> </tr> <tr> <td>Primary shaft seal:</td> <td>SIC-SIC</td> </tr> <tr> <td>Secondary shaft seal:</td> <td>CERAMIC-CARBON</td> </tr> <tr> <td>Max. hydraulic efficiency:</td> <td>53 %</td> </tr> <tr> <td>Curve tolerance:</td> <td>NONE</td> </tr> </table> <p data-bbox="323 1641 437 1675"><b>Materials:</b></p> <table data-bbox="323 1675 959 1850"> <tr> <td>Pump housing:</td> <td>Cast iron EN1561 EN-GJL-200</td> </tr> <tr> <td>Impeller:</td> <td>Ductile cast iron EN1563 EN-GJS-450-10</td> </tr> <tr> <td>Motor:</td> <td>Cast iron EN1561 EN-GJL-200</td> </tr> </table> <p data-bbox="323 1877 461 1910"><b>Installation:</b></p> <table data-bbox="323 1910 756 2000"> <tr> <td>Maximum ambient temperature:</td> <td>40 °C</td> </tr> <tr> <td>Pump outlet:</td> <td>DN 80</td> </tr> <tr> <td>Maximum installation depth:</td> <td>25 m</td> </tr> </table> <p data-bbox="323 2027 499 2060"><b>Electrical data:</b></p> <table data-bbox="323 2060 762 2094"> <tr> <td>Rated power - P2:</td> <td>3.7 kW</td> </tr> </table>	Seal sensor:	N	Liquid temperature range:	0 .. 40 °C	Density:	998.2 kg/m <sup>3</sup>	Actual impeller diameter:	155 mm	Type of impeller:	O	Maximum particle size:	10 mm	Primary shaft seal:	SIC-SIC	Secondary shaft seal:	CERAMIC-CARBON	Max. hydraulic efficiency:	53 %	Curve tolerance:	NONE	Pump housing:	Cast iron EN1561 EN-GJL-200	Impeller:	Ductile cast iron EN1563 EN-GJS-450-10	Motor:	Cast iron EN1561 EN-GJL-200	Maximum ambient temperature:	40 °C	Pump outlet:	DN 80	Maximum installation depth:	25 m	Rated power - P2:	3.7 kW
Seal sensor:	N																																			
Liquid temperature range:	0 .. 40 °C																																			
Density:	998.2 kg/m <sup>3</sup>																																			
Actual impeller diameter:	155 mm																																			
Type of impeller:	O																																			
Maximum particle size:	10 mm																																			
Primary shaft seal:	SIC-SIC																																			
Secondary shaft seal:	CERAMIC-CARBON																																			
Max. hydraulic efficiency:	53 %																																			
Curve tolerance:	NONE																																			
Pump housing:	Cast iron EN1561 EN-GJL-200																																			
Impeller:	Ductile cast iron EN1563 EN-GJS-450-10																																			
Motor:	Cast iron EN1561 EN-GJL-200																																			
Maximum ambient temperature:	40 °C																																			
Pump outlet:	DN 80																																			
Maximum installation depth:	25 m																																			
Rated power - P2:	3.7 kW																																			

Position	Qty.	Description
		Mains frequency: 50 Hz Rated voltage: 3 x 380-415 V Voltage tolerance: +5/-5 % Max starts per. hour: 30 Rated current: 7.6 A Rated current at 3/4 load: 5.9 A Rated current at 1/2 load: 4.1 A Cos phi - power factor: 0.91 Cos phi - p.f. at 3/4 load: 0.9 Cos phi - p.f. at 1/2 load: 0.85 Rated speed: 2850 rpm Motor efficiency at full load: 84.5 % Motor efficiency at 3/4 load: 85.5 % Motor efficiency at 1/2 load: 85.6 % Number of poles: 2 Start. method: direct-on-line Enclosure class (IEC 34-5): IP68 Insulation class (IEC 85): F Explosion proof: no Length of cable: 10 m Cable type: TP90/TP90  <b>Others:</b> Net weight: 81 kg

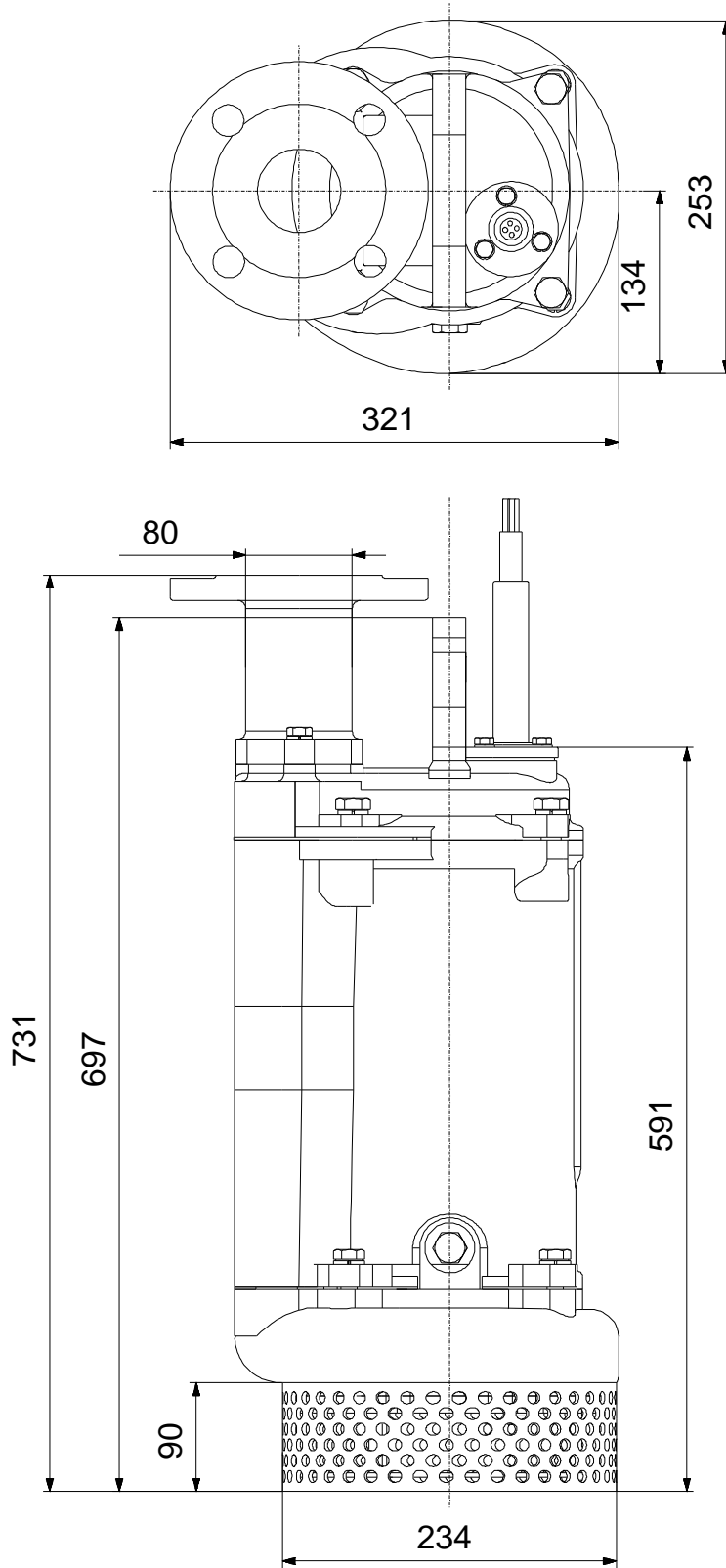
# On request DWK.O.10.80.37.5.0D 50 Hz



Description	Value
<b>General information:</b>	
Product name:	DWK.O.10.80.37.5.0D
Product No:	On request
EAN number:	On request
<b>Technical:</b>	
Max flow:	17.1 l/s
Head min:	8.8 m
Head max:	25.6 m
Actual impeller diameter:	155 mm
Type of impeller:	O
Maximum particle size:	10 mm
Primary shaft seal:	SIC-SIC
Secondary shaft seal:	CERAMIC-CARBON
Max. hydraulic efficiency:	53 %
Curve tolerance:	NONE
<b>Materials:</b>	
Pump housing:	Cast iron EN1561 EN-GJL-200
Impeller:	Ductile cast iron EN1563 EN-GJS-450-10
Motor:	Cast iron EN1561 EN-GJL-200
<b>Installation:</b>	
Maximum ambient temperature:	40 °C
Pump outlet:	DN 80
Maximum installation depth:	25 m
<b>Liquid:</b>	
Liquid temperature range:	0 .. 40 °C
Density:	998.2 kg/m <sup>3</sup>
Min. pH-value:	4
<b>Electrical data:</b>	
Rated power - P2:	3.7 kW
Mains frequency:	50 Hz
Rated voltage:	3 x 380-415 V
Voltage tolerance:	+5/-5 %
Max starts per. hour:	30
Rated current:	7.6 A
Rated current at 3/4 load:	5.9 A
Rated current at 1/2 load:	4.1 A
Cos phi - power factor:	0.91
Cos phi - p.f. at 3/4 load:	0.9
Cos phi - p.f. at 1/2 load:	0.85
Rated speed:	2850 rpm
Motor efficiency at full load:	84.5 %
Motor efficiency at 3/4 load:	85.5 %
Motor efficiency at 1/2 load:	85.6 %
Number of poles:	2
Start. method:	direct-on-line
Enclosure class (IEC 34-5):	IP68
Insulation class (IEC 85):	F
Explosion proof:	no
Length of cable:	10 m
Cable type:	TP90/TP90
Cable size:	4X1.5MM <sup>2</sup> +2X1MM <sup>2</sup>
<b>Controls:</b>	
Seal sensor:	N
Sensor type:	N
<b>Others:</b>	
Net weight:	81 kg

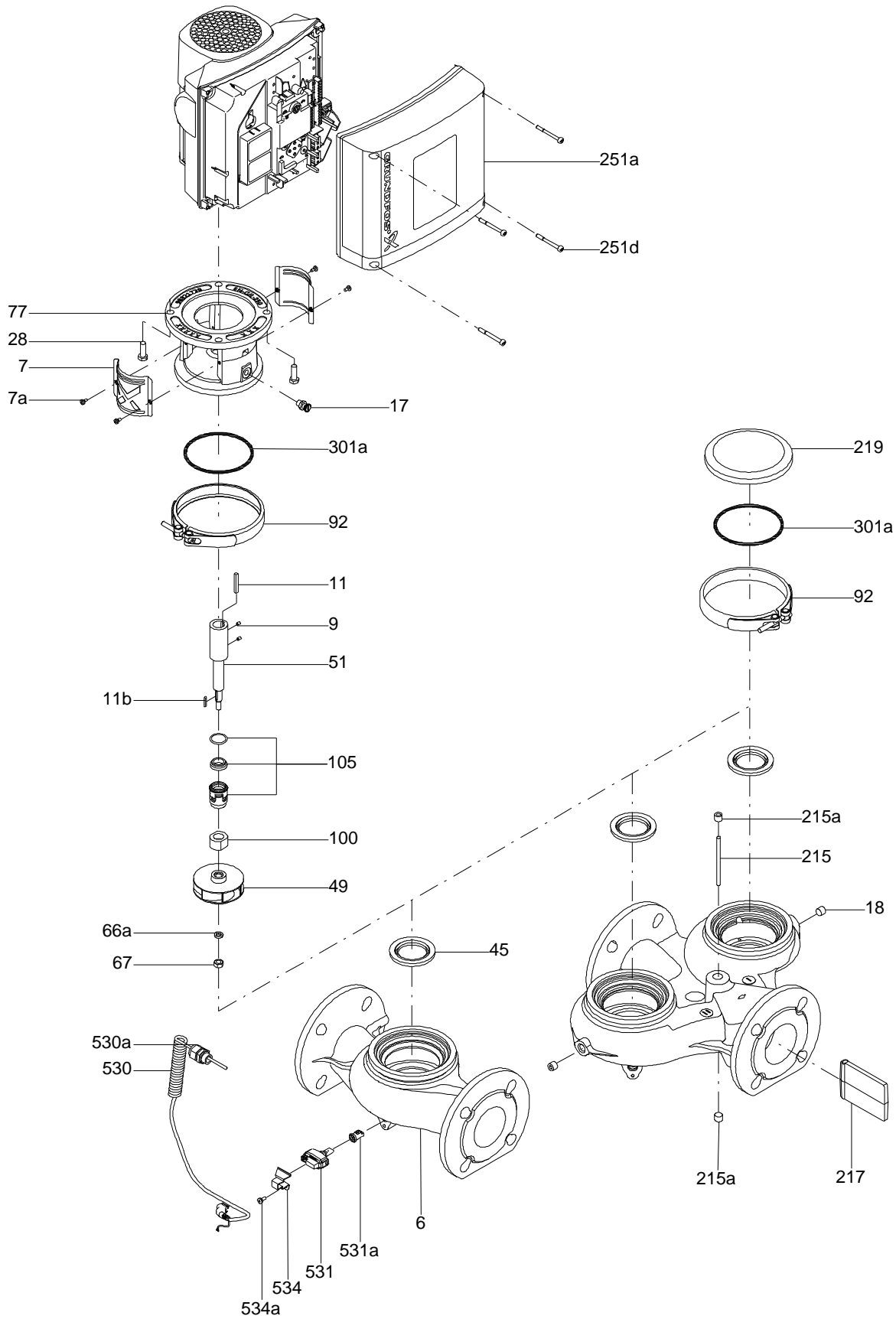


**On request DWK.O.10.80.37.5.0D 50 Hz**



Note! All units are in [mm] unless others are stated.  
Disclaimer: This simplified dimensional drawing does not show all details.

Exploded view



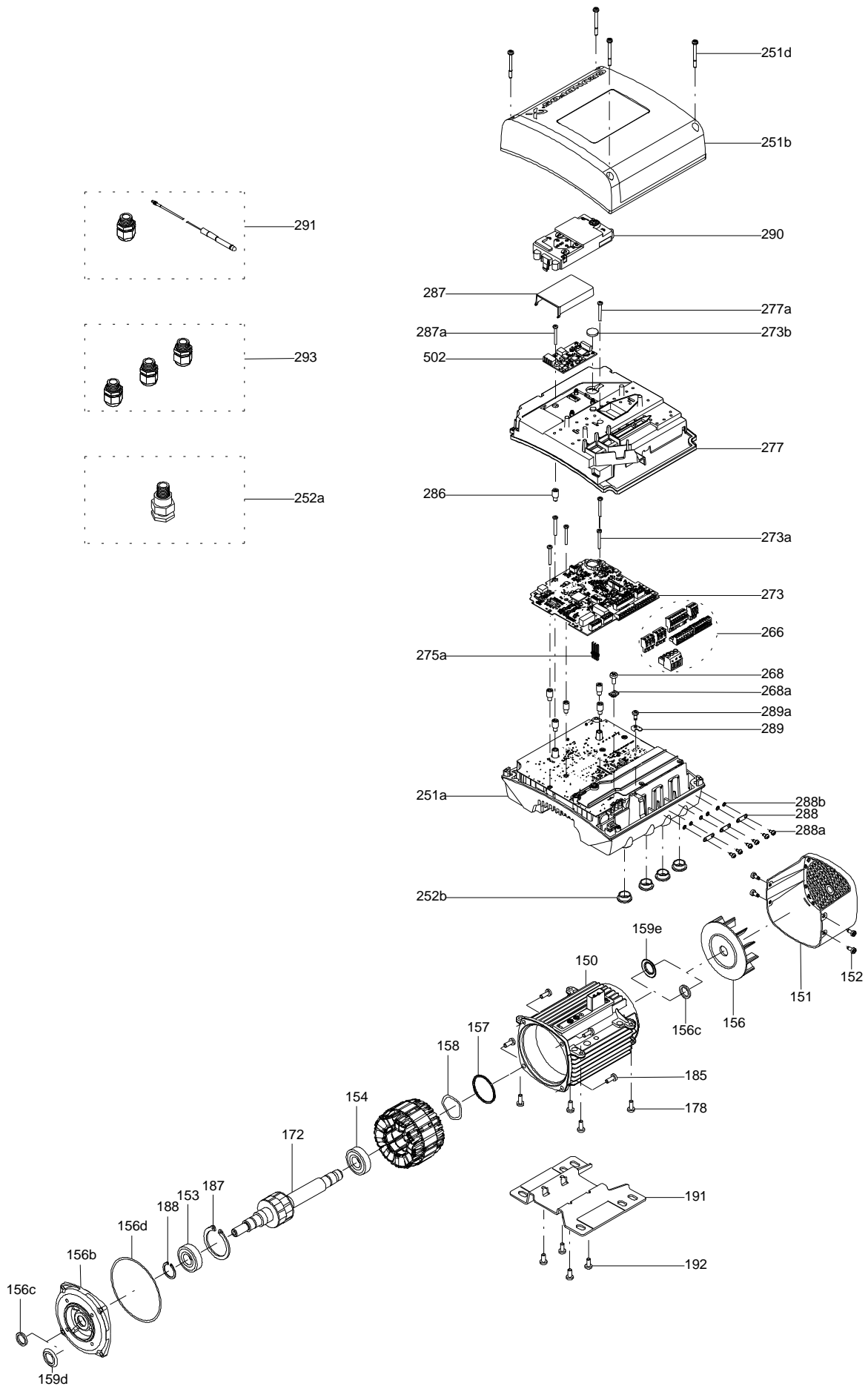
Sectional drawing (TM058200 for TPE2,TPE3)



TM058200



Exploded view ( TM057026 for MGE model H/I )



**Parts list DWK.O.10.80.37.5.0D, Product No. On request**  
**Valid from 1.5.2009 (0918)**

Pos	Description	Annotation	Données de classification	Référence	Quantité	Unité
-	Flange				1	pcs
12	Flange				1	
35	Hex head bolt				4	
35b	Spring lock washer				4	
-	O-ring				1	pcs
35a	O-ring				1	
37b	O-ring				1	
37e	Rubber				1	
39	O-ring				1	
39e	Rubber				1	
109	O-ring				1	
-	Cable				1	pcs
	Hex head screw				1	
	Hex head screw				1	
	Nut				1	
	Nut				1	
	Clamp				1	
	Clamp				1	
	Rubber bush				1	
168	Cable gland				1	
181	Power cable				1	
181a	Hex head bolt				2	
188b	Lock washer				2	
198	Rubber bush				2	
198a	Washer				2	
-	Motor assembly				1	pcs
	Bolt				1	
48	Stator				1	
55	Motor housing				1	
59	Bearing cover				1	
60	Bearing housing				1	
60a	Hex head screw				3	
60b	Spring lock washer				3	
102	Stop ring				1	
151	Bracket				1	
153	Ball bearing				1	
153	Ball bearing				1	
154a	Insulation plate				1	
172	Shaft w/rotor				1	
178	Hex head screw				2	
178a	Lock washer				2	
182	Hex socket head cap screw		Length (mm): 20 Thread: M8		4	
182a	Spring lock washer				4	
183	Hex head screw				5	
183a	Spring lock washer				5	
184	Hex head screw				4	
184a	Spring lock washer				4	
190	Lifting device				1	
193	Plug				2	
-	Hydraulic assembly				1	pcs
9a	Key				1	
46	Sealing part				1	
49	Impeller				1	
50	Pump housing				1	
66	Spring lock washer				1	
84a	Strainer				1	
84b	Hex head screw				3	
84c	Lock washer				3	

Pos	Description	Annotation	Données de classification	Référence	Quantité	Unité
105	Mechanical seal cpl.				1	
105b	Pan head screw				3	
188	Cap nut				1	
188a	Hex head screw				3	
188b	Lock washer				3	
189	Suction cover				1	

*Disclaimer: The information about the Grundfos pump in this document may be outdated.*

*Data may be subject to alterations without further notice.*

*Please contact us to verify the data above is still accurate/up-to-date.*

All information is copyright Grundfos.



[info@lenntech.com](mailto:info@lenntech.com)

<https://www.lenntech.com>

tel. +31 152 610 900

fax. +31 152 616 289