

DWK.O.13.100.150.5.0D

Grundfos pump 96922665




Thank you for your interest in our products. Please contact us for more information, or visit our website

<https://www.lenntech.com/grundfos/DWK000/96922665/DWK-O-13-100-150-5-0D.html>

info@lenntech.com

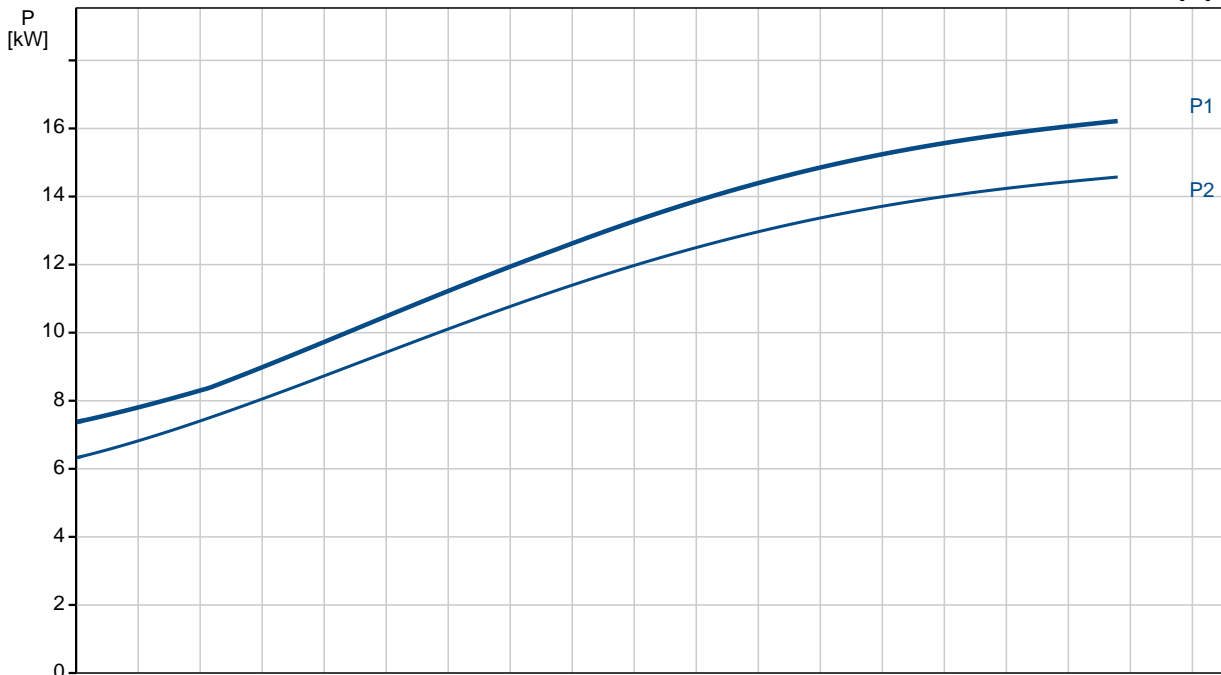
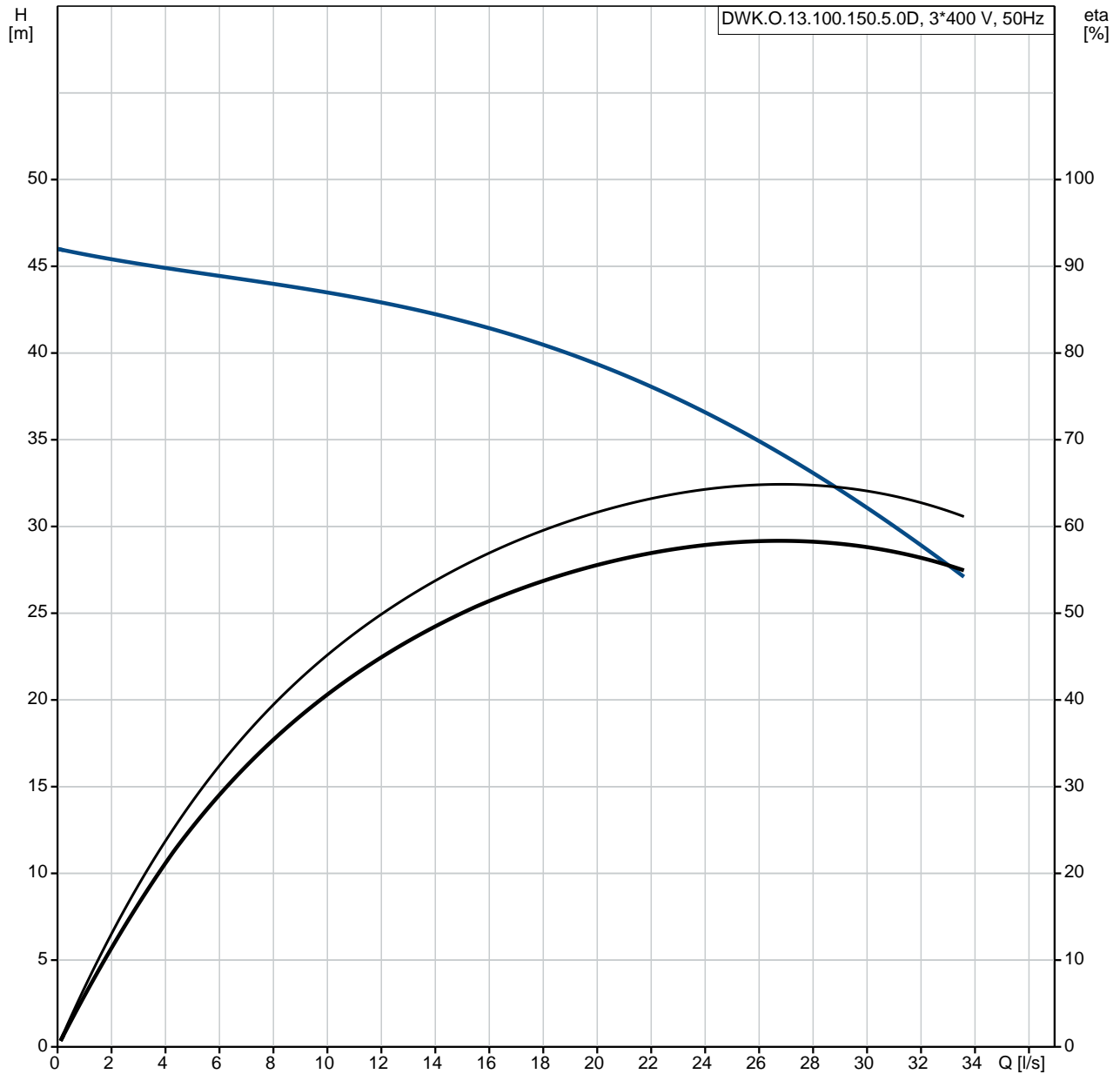
tel. +31 152 610 900

fax. +31 152 616 289

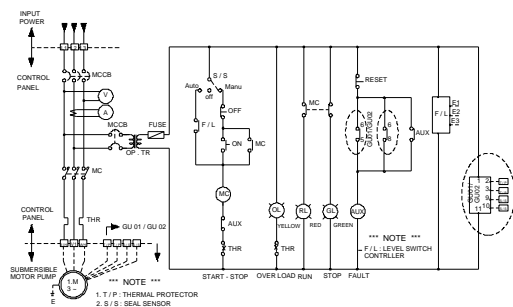
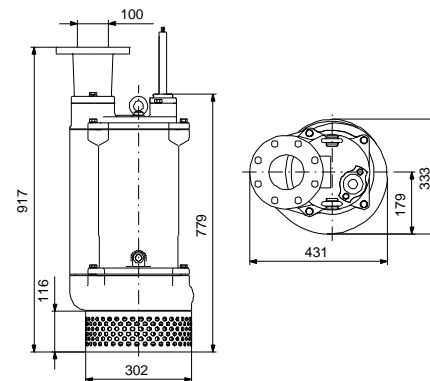
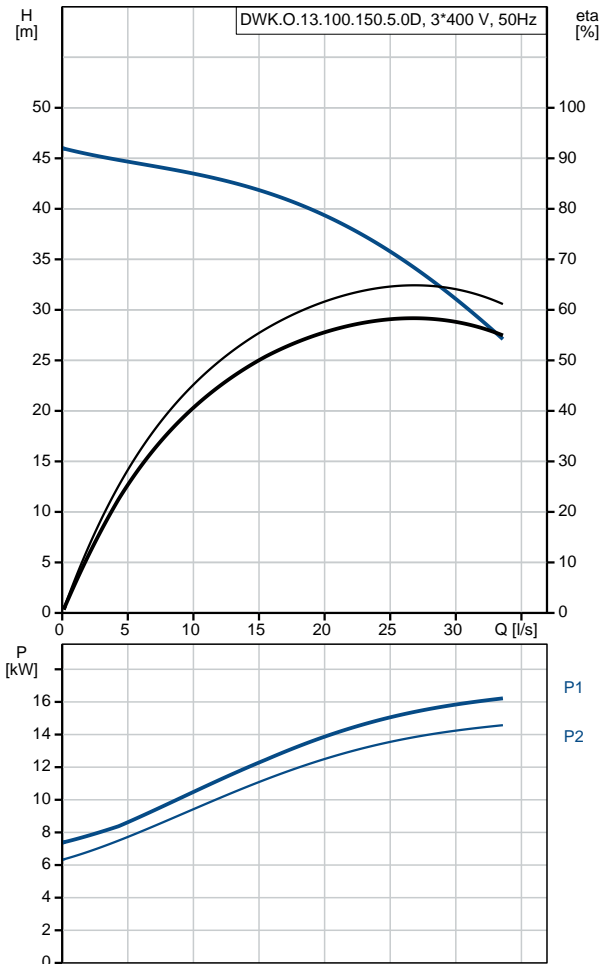
Position	Qty.	Description
	1	<p data-bbox="320 163 598 197">DWK.O.13.100.150.5.0D</p>  <p data-bbox="320 483 598 517">Product No.: On request</p> <p data-bbox="320 542 651 575">Submersible Contractor Pump</p> <p data-bbox="320 600 1270 633">Grundfos DWK pump is a submersible pump for dewatering and drainage applications.</p> <p data-bbox="320 658 877 781">The pump is suitable for pumping -large quantities of underground and surface water -drainage water at high head -water with dirt from drainage pits</p> <p data-bbox="320 806 1340 840">The compact design makes the pump suitable for both temporary and permanent installation.</p> <p data-bbox="320 864 1449 931">The pump is cast iron, with vertical discharge port and integrated submersible 3-phase totally enclosed motor in insulation class F (155°C).</p> <p data-bbox="320 956 1212 990">The pump has a rise pipe, a double mechanical seal and semi-open impeller type</p> <p data-bbox="320 1014 1430 1081">The pump is equipped with a temperature Bi-metal sensor for motor protection in case of overheating and electrode seal sensor to detect water penetration in to the motor housing.</p> <p data-bbox="320 1106 1078 1140">The pump is fitted with suction strainer, lifting handle and 10 m cable.</p> <p data-bbox="320 1193 432 1227">Controls:</p> <p data-bbox="320 1227 702 1261">Seal sensor: N</p> <p data-bbox="320 1285 405 1319">Liquid:</p> <p data-bbox="320 1319 790 1352">Liquid temperature range: 0 .. 40 °C</p> <p data-bbox="320 1352 817 1386">Density: 998.2 kg/m³</p> <p data-bbox="320 1408 443 1442">Technical:</p> <p data-bbox="320 1442 774 1476">Actual impeller diameter: 193 mm</p> <p data-bbox="320 1476 702 1509">Type of impeller: O</p> <p data-bbox="320 1509 762 1543">Maximum particle size: 13 mm</p> <p data-bbox="320 1543 774 1576">Primary shaft seal: SIC-SIC</p> <p data-bbox="320 1576 912 1610">Secondary shaft seal: CERAMIC-CARBON</p> <p data-bbox="320 1610 742 1644">Max. hydraulic efficiency: 66 %</p> <p data-bbox="320 1644 758 1677">Curve tolerance: NONE</p> <p data-bbox="320 1700 437 1733">Materials:</p> <p data-bbox="320 1733 877 1789">Pump housing: Cast iron DIN W.-Nr. GG20</p> <p data-bbox="320 1789 909 1845">Impeller: Ductile cast iron DIN W.-Nr. GCD450</p> <p data-bbox="320 1845 917 1901">Motor: Cast iron EN1561 EN-GJL-200</p> <p data-bbox="320 1924 459 1957">Installation:</p> <p data-bbox="320 1957 746 1991">Maximum ambient temperature: 40 °C</p> <p data-bbox="320 1991 769 2024">Pump outlet: DN 100</p> <p data-bbox="320 2024 742 2058">Maximum installation depth: 25 m</p> <p data-bbox="320 2080 497 2114">Electrical data:</p>

Position	Qty.	Description
		<p>Rated power - P2: 15 kW</p> <p>Mains frequency: 50 Hz</p> <p>Rated voltage: 3 x 380-415 V</p> <p>Voltage tolerance: +5/-5 %</p> <p>Max starts per. hour: 30</p> <p>Rated current: 27.8 A</p> <p>Rated current at 3/4 load: 21.1 A</p> <p>Rated current at 1/2 load: 14.5 A</p> <p>Cos phi - power factor: 0.92</p> <p>Cos phi - p.f. at 3/4 load: 0.91</p> <p>Cos phi - p.f. at 1/2 load: 0.88</p> <p>Rated speed: 2850 rpm</p> <p>Motor efficiency at full load: 89.8 %</p> <p>Motor efficiency at 3/4 load: 90.3 %</p> <p>Motor efficiency at 1/2 load: 89.5 %</p> <p>Number of poles: 2</p> <p>Start. method: direct-on-line</p> <p>Enclosure class (IEC 34-5): IP68</p> <p>Insulation class (IEC 85): F</p> <p>Explosion proof: no</p> <p>Length of cable: 10 m</p> <p>Cable type: TP90/TP90</p> <p>Others:</p> <p>Net weight: 195 kg</p>

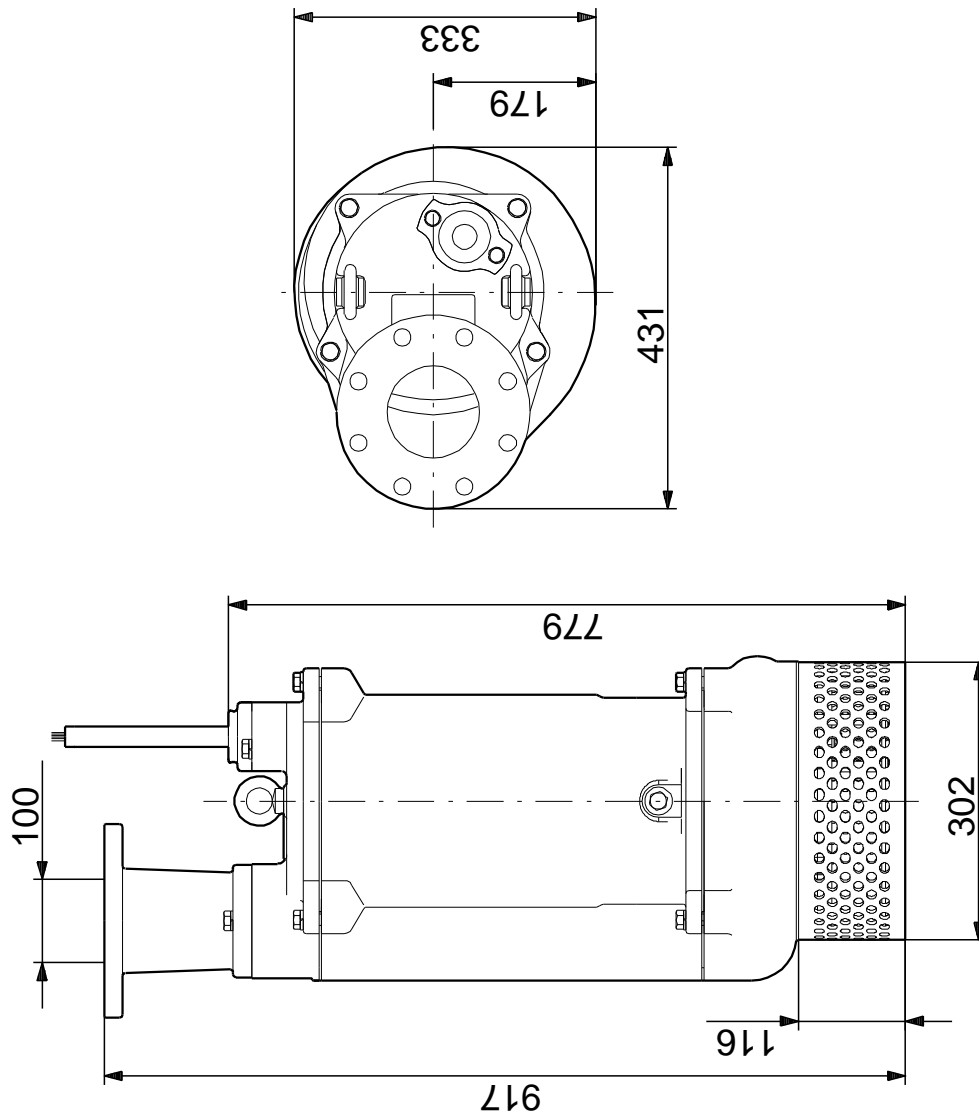
On request DWK.O.13.100.150.5.0D 50 Hz



Description	Value
General information:	
Product name:	DWK.O.13.100.150.5.0D
Product No:	On request
EAN number:	On request
Technical:	
Max flow:	33.9 l/s
Head min:	26.3 m
Head max:	46.4 m
Actual impeller diameter:	193 mm
Type of impeller:	O
Maximum particle size:	13 mm
Primary shaft seal:	SIC-SIC
Secondary shaft seal:	CERAMIC-CARBON
Max. hydraulic efficiency:	66 %
Curve tolerance:	NONE
Materials:	
Pump housing:	Cast iron DIN W.-Nr. GG20
Impeller:	Ductile cast iron DIN W.-Nr. GCD450
Motor:	Cast iron EN1561 EN-GJL-200
Installation:	
Maximum ambient temperature:	40 °C
Pump outlet:	DN 100
Maximum installation depth:	25 m
Liquid:	
Liquid temperature range:	0 .. 40 °C
Density:	998.2 kg/m ³
Min. pH-value:	4
Electrical data:	
Rated power - P2:	15 kW
Mains frequency:	50 Hz
Rated voltage:	3 x 380-415 V
Voltage tolerance:	+5/-5 %
Max starts per. hour:	30
Rated current:	27.8 A
Rated current at 3/4 load:	21.1 A
Rated current at 1/2 load:	14.5 A
Cos phi - power factor:	0.92
Cos phi - p.f. at 3/4 load:	0.91
Cos phi - p.f. at 1/2 load:	0.88
Rated speed:	2850 rpm
Motor efficiency at full load:	89.8 %
Motor efficiency at 3/4 load:	90.3 %
Motor efficiency at 1/2 load:	89.5 %
Number of poles:	2
Start. method:	direct-on-line
Enclosure class (IEC 34-5):	IP68
Insulation class (IEC 85):	F
Explosion proof:	no
Length of cable:	10 m
Cable type:	TP90/TP90
Cable size:	4X6.0MM2+4X1MM2
Controls:	
Seal sensor:	N
Sensor type:	Y
Others:	
Net weight:	195 kg

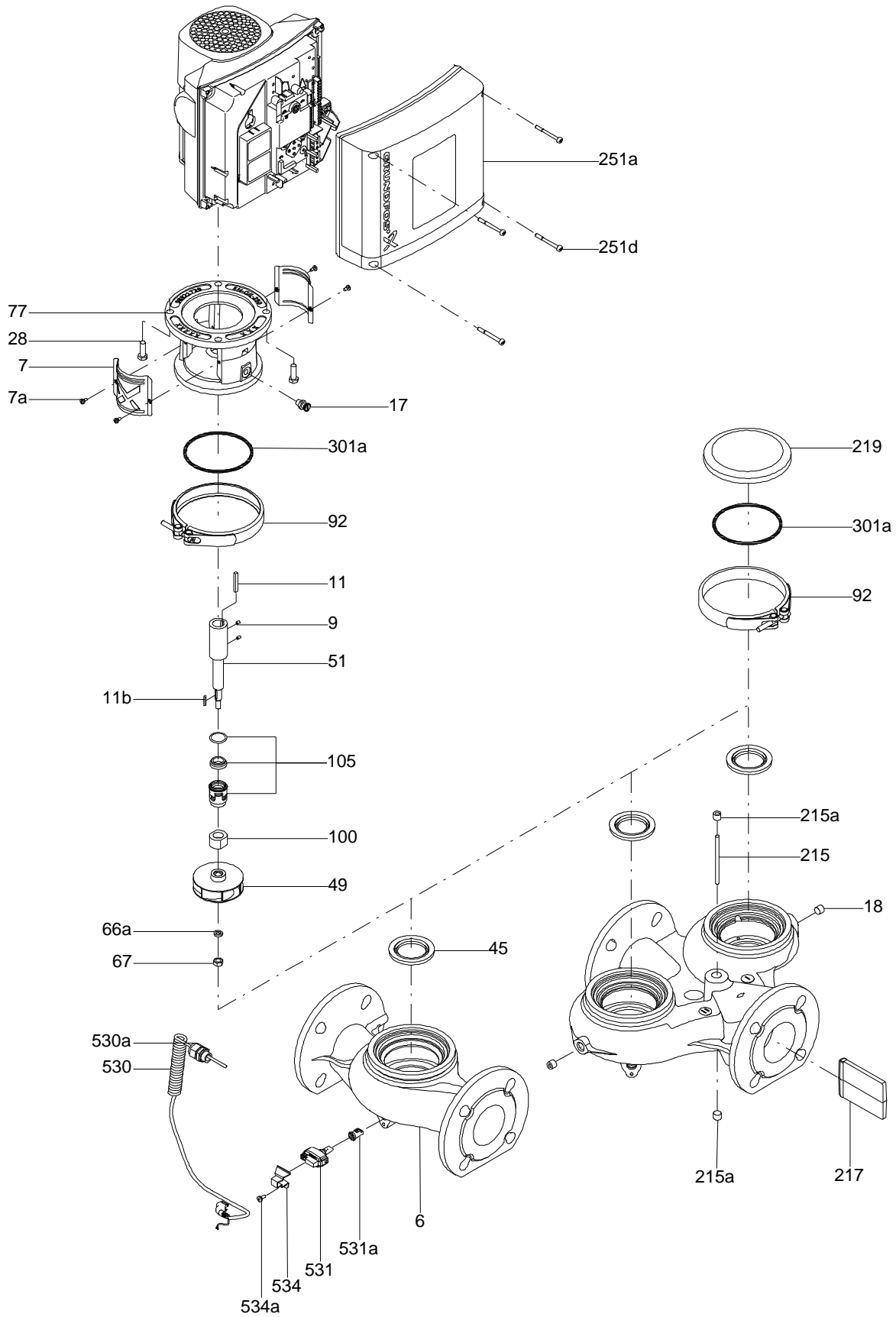


On request DWK.O.13.100.150.5.0D 50 Hz



Note! All units are in [mm] unless others are stated.
Disclaimer: This simplified dimensional drawing does not show all details.

Exploded view

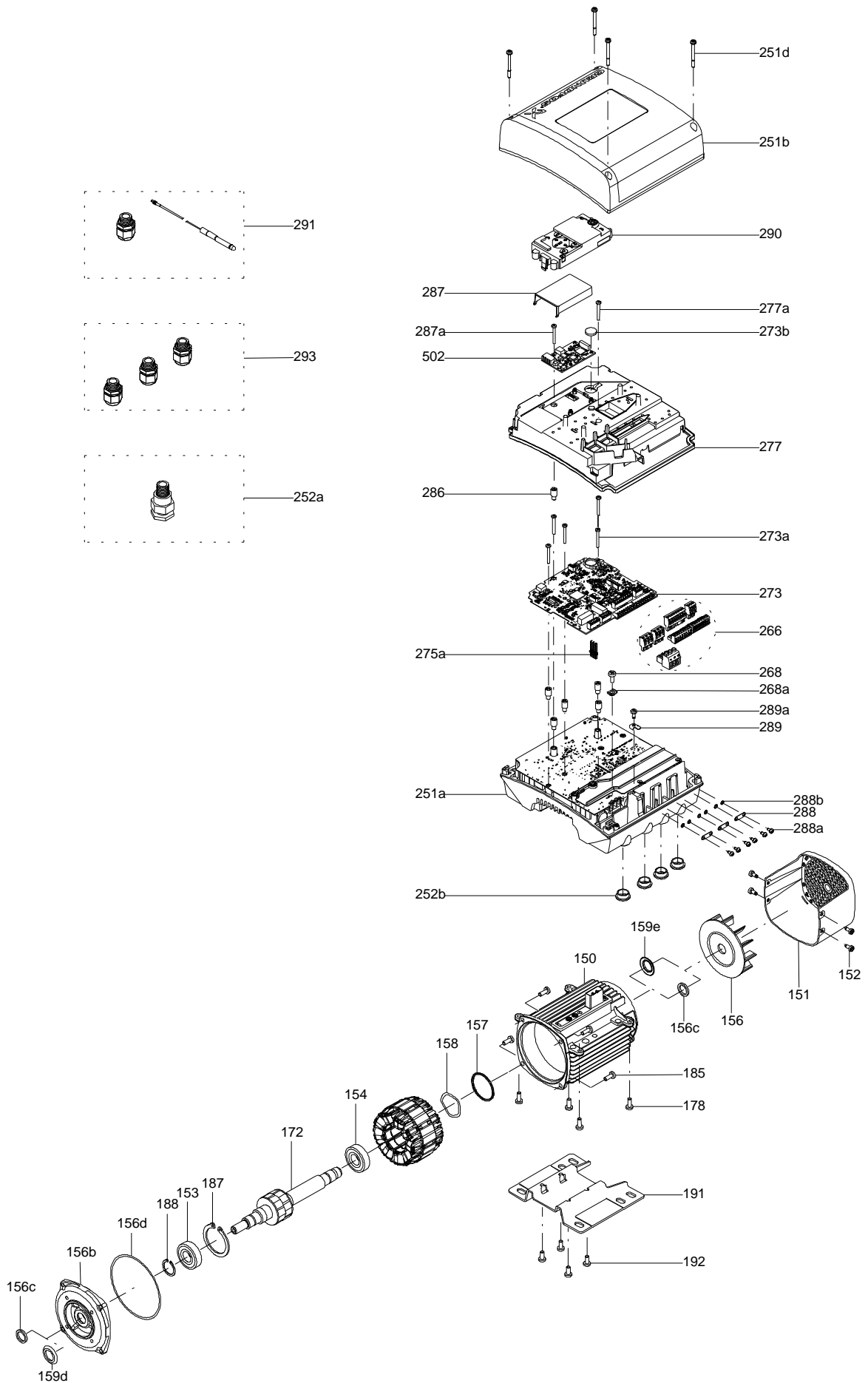


Sectional drawing (TM058200 for TPE2,TPE3)



TM058200

Exploded view (TM057026 for MGE model H/I)



**Parts list DWK.O.13.100.150.5.0D, Product No. On request
Valid from 1.5.2009 (0918)**

Pos	Description	Annotation	Données de classification	Référence	Quantité	Unité
-	Flange				1	pcs
12	Flange				1	
35	Hex head bolt				4	
35b	Spring lock washer				4	
-	O-ring				1	pcs
35a	O-ring				1	
37b	O-ring				1	
37e	Rubber				1	
39	O-ring				1	
39e	Rubber				1	
109	O-ring				1	
-	Cable				1	pcs
	Hex head screw				2	
	Hex head screw				1	
	Nut				2	
	Nut				1	
	Clamp				1	
	Rubber bush				1	
	Cable clamp				1	
168	Cable gland				1	
181	Power cable				1	
181a	Hex head bolt				2	
181b	Spring lock washer				2	
198	Rubber bush				2	
198a	Washer				2	
-	Motor assembly				1	pcs
	Bolt				1	
	Sensor				1	
	Hex head bolt				2	
48	Stator				1	
55	Motor housing				1	
59	Bearing cover				1	
60	Bearing housing				1	
60a	Hex head screw				4	
60b	Spring lock washer				4	
102	Stop ring				1	
151	Bracket				1	
153	Angular-contact bearing				1	
153a	Ball bearing				1	
154	Ball bearing				1	
154a	Insulation plate				1	
172	Shaft w/rotor				1	
182	Hex head screw				6	
182a	Spring lock washer				6	
183	Hex head screw				6	
183a	Spring lock washer				6	
183b	Hex head bolt				2	
183c	Spring lock washer				2	
184	Hex head screw				4	
184a	Spring lock washer				4	
190d	Eyebolt				2	
193	Plug				2	
-	Hydraulic assembly				1	pcs
9a	Key				1	
46	Sealing part				2	
49	Impeller				1	
50	Pump housing				1	
66	Washer				1	
84a	Strainer				1	

Pos	Description	Annotation	Données de classification	Référence	Quantité	Unité
84b	Hex head screw				3	
84c	Spring lock washer				3	
105	Mechanical seal cpl.				1	
105b	Pan head screw				3	
188	Cap nut				1	
188a	Hex head screw				3	
188b	Spring lock washer				3	
189	Suction cover				1	

Disclaimer: The information about the Grundfos pump in this document may be outdated.

Data may be subject to alterations without further notice.

Please contact us to verify the data above is still accurate/up-to-date.

All information is copyright Grundfos.



info@lenntech.com

<https://www.lenntech.com>

tel. +31 152 610 900

fax. +31 152 616 289