

DWK.E.10.150.300.5.1D

Grundfos pump 96922669




Thank you for your interest in our products. Please contact us for more information, or visit our website

<https://www.lenntech.com/grundfos/DWK000/96922669/DWK-E-10-150-300-5-1D.html>

info@lenntech.com

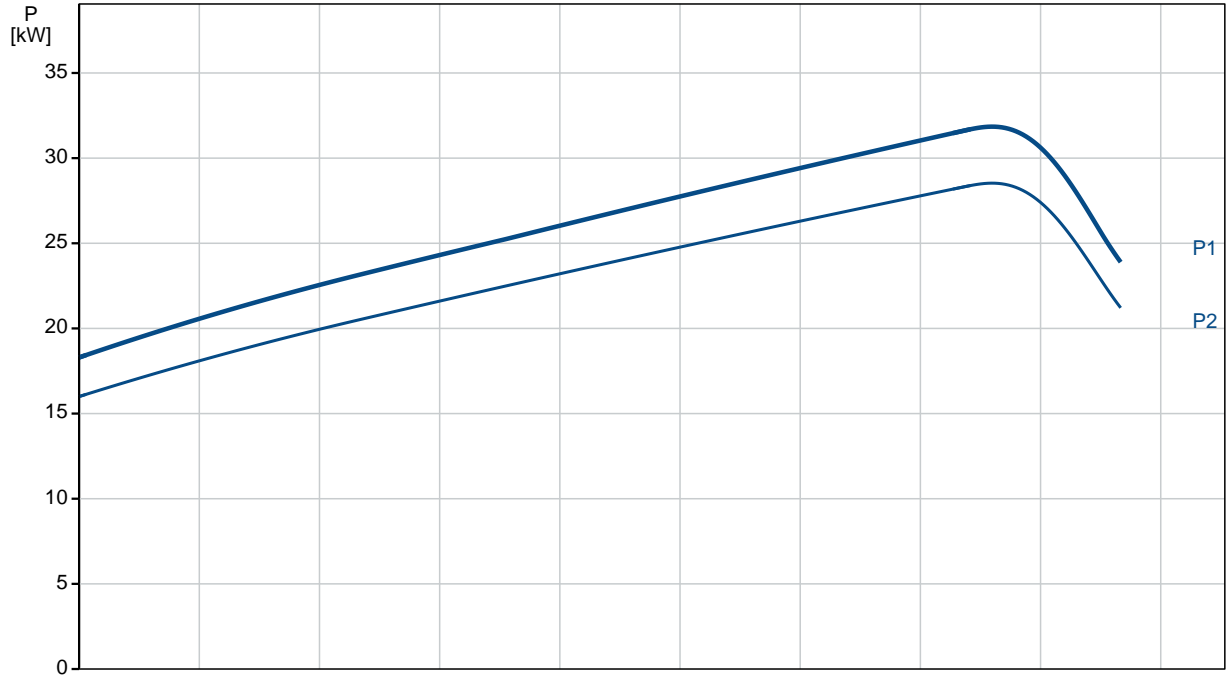
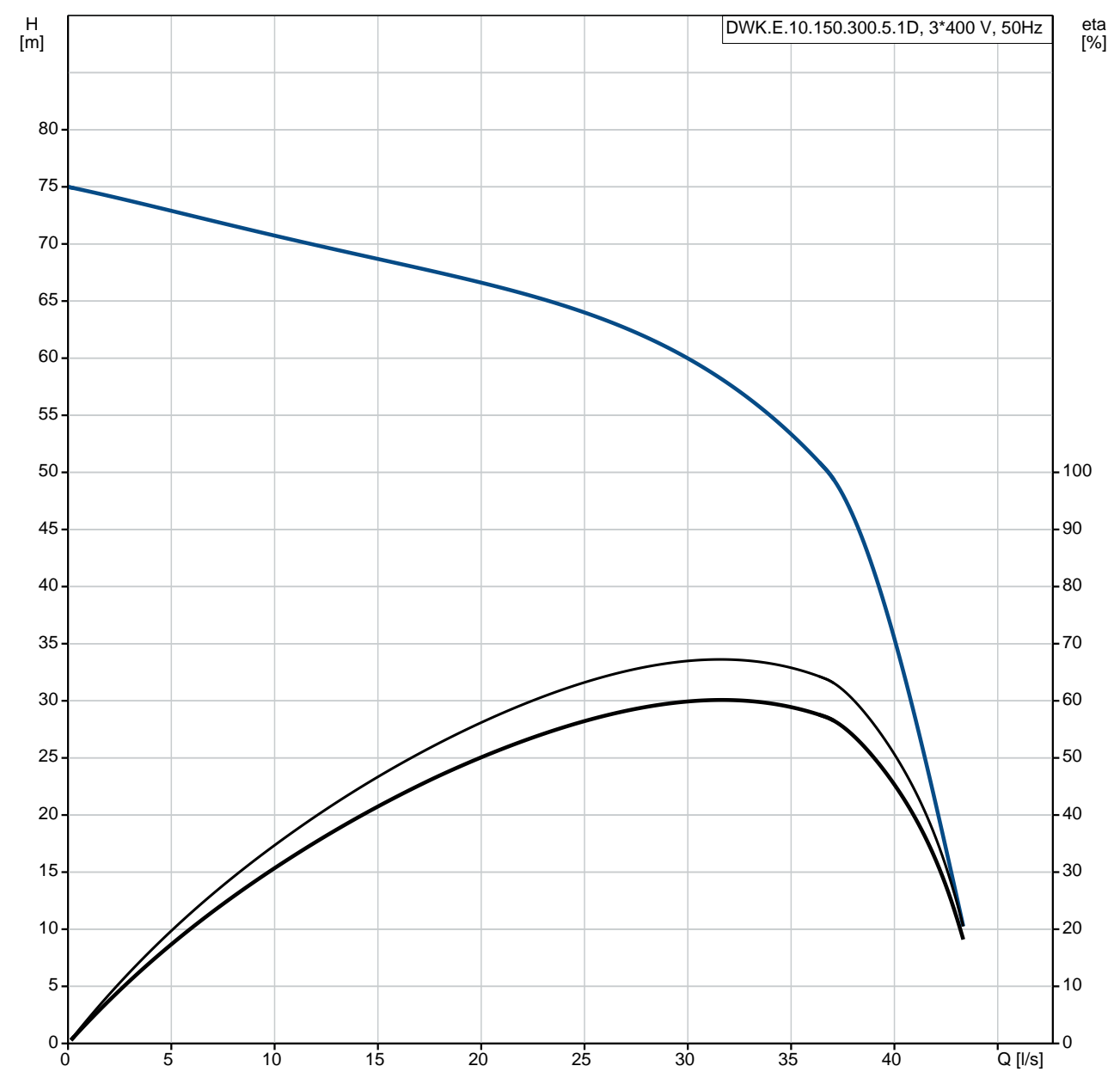
tel. +31 152 610 900

fax. +31 152 616 289

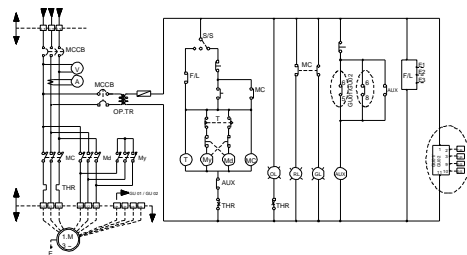
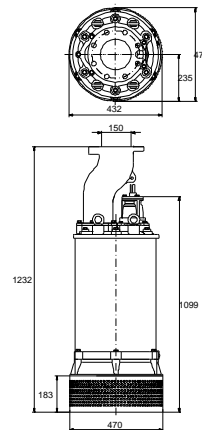
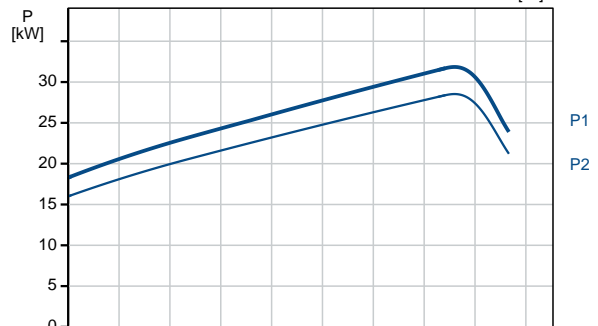
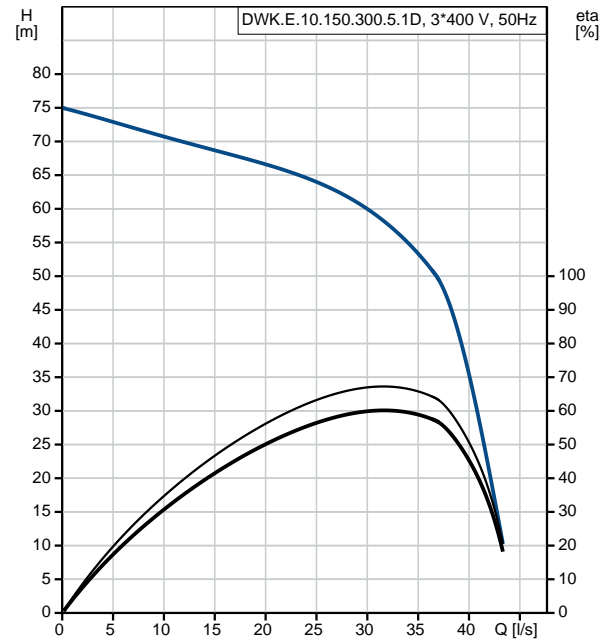
Position	Qty.	Description
	1	<p data-bbox="320 163 595 197">DWK.E.10.150.300.5.1D</p>  <p data-bbox="711 692 1193 719">Note! Product picture may differ from actual product</p> <p data-bbox="320 723 600 750">Product No.: On request</p> <p data-bbox="320 781 652 808">Submersible Contractor Pump</p> <p data-bbox="320 840 1270 866">Grundfos DWK pump is a submersible pump for dewatering and drainage applications.</p> <p data-bbox="320 898 877 1016">The pump is suitable for pumping -large quantities of underground and surface water -drainage water at high head -water with dirt from drainage pits</p> <p data-bbox="320 1048 1217 1075">The pump design makes it suitable for both temporary and permanent installation.</p> <p data-bbox="320 1106 1445 1160">The pump is cast iron, with vertical discharge port and integrated submersible 3-phase enclosed motor in insulation class F (155°C).</p> <p data-bbox="320 1191 1418 1245">The pump has a riser pipe, a cooling jacket for continuous cooling of the motor by the pumped liquid and an enclosed impeller to ensure high efficiency.</p> <p data-bbox="320 1276 1433 1330">The pump is equipped with a double mechanical seal and an additional lip seal that protects the shaft and the mechanical seal against abrasives.</p> <p data-bbox="320 1361 927 1388">The pump is fitted with suction strainer and 10 m cable.</p> <p data-bbox="320 1420 1430 1473">The pump is equipped with a temperature Bi-metal sensor for motor protection in case of overheating and electrode seal sensor to detect water penetration in to the motor housing.</p> <p data-bbox="320 1505 1457 1559">The cable sealing consists of a rubber bushing, epoxy and rubber cover that eliminates the risk of water penetration into the motor.</p> <p data-bbox="320 1635 432 1662">Controls:</p> <p data-bbox="320 1666 699 1693">Seal sensor: Y</p> <p data-bbox="320 1724 405 1751">Liquid:</p> <p data-bbox="320 1756 788 1783">Liquid temperature range: 0 .. 40 °C</p> <p data-bbox="320 1787 815 1814">Density: 998.2 kg/m³</p> <p data-bbox="320 1845 443 1872">Technical:</p> <p data-bbox="320 1877 775 1904">Actual impeller diameter: 243 mm</p> <p data-bbox="320 1908 699 1935">Type of impeller: E</p> <p data-bbox="320 1939 762 1966">Maximum particle size: 10 mm</p> <p data-bbox="320 1971 775 1998">Primary shaft seal: SIC-SIC</p> <p data-bbox="320 2002 912 2029">Secondary shaft seal: CERAMIC-CARBON</p> <p data-bbox="320 2033 743 2060">Max. hydraulic efficiency: 75 %</p> <p data-bbox="320 2065 884 2092">Curve tolerance: ISO9906:2012 3B</p>

Position	Qty.	Description
		<p>Materials:</p> <p>Pump housing: Cast iron EN1561 EN-GJL-200</p> <p>Impeller: Ductile cast iron EN1563 EN-GJS-450-10</p> <p>Motor: Cast iron EN1561 EN-GJL-200</p> <p>Installation:</p> <p>Maximum ambient temperature: 40 °C Pump outlet: DN 150 Maximum installation depth: 25 m</p> <p>Electrical data:</p> <p>Rated power - P2: 30 kW Mains frequency: 50 Hz Rated voltage: 3 x 380-415 V Voltage tolerance: +5/-5 % Max starts per. hour: 18 Rated current: 59 A Rated current at 3/4 load: 46 A Rated current at 1/2 load: 34 A Cos phi - power factor: 0.86 Cos phi - p.f. at 3/4 load: 0.828 Cos phi - p.f. at 1/2 load: 0.751 Rated speed: 2850 rpm Motor efficiency at full load: 89.7 % Motor efficiency at 3/4 load: 89.1 % Motor efficiency at 1/2 load: 87.2 % Number of poles: 2 Start. method: star/delta Enclosure class (IEC 34-5): IP68 Insulation class (IEC 85): F Explosion proof: no Length of cable: 10 m Cable type: TP90/TP90</p> <p>Others:</p> <p>Net weight: 452 kg</p>

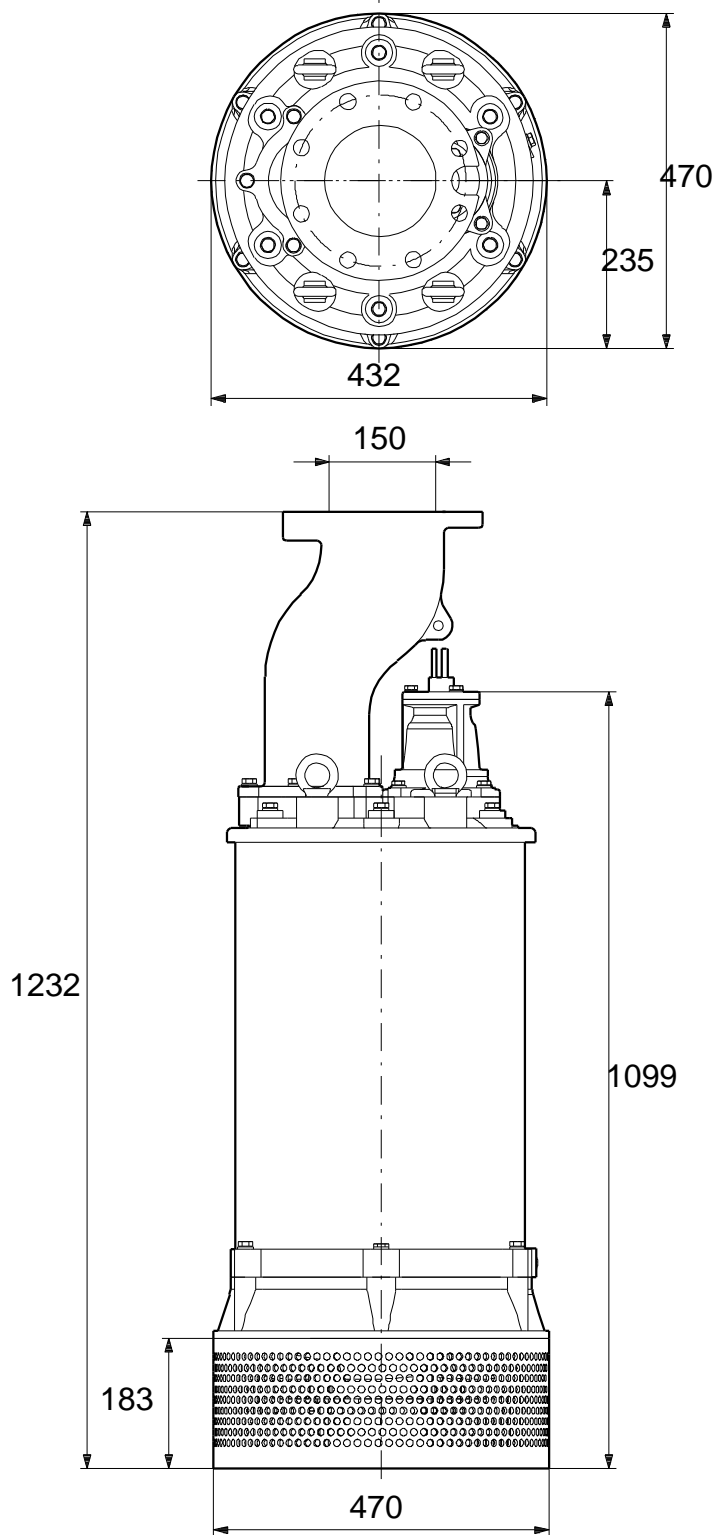
On request DWK.E.10.150.300.5.1D 50 Hz



Description	Value
General information:	
Product name:	DWK.E.10.150.300.5.1D
Product No:	On request
EAN number:	On request
Technical:	
Max flow:	48.6 l/s
Head min:	5 m
Head max:	71 m
Actual impeller diameter:	243 mm
Type of impeller:	E
Maximum particle size:	10 mm
Primary shaft seal:	SIC-SIC
Secondary shaft seal:	CERAMIC-CARBON
Max. hydraulic efficiency:	75 %
Curve tolerance:	ISO9906:2012 3B
Materials:	
Pump housing:	Cast iron EN1561 EN-GJL-200
Impeller:	Ductile cast iron EN1563 EN-GJS-450-10
Motor:	Cast iron EN1561 EN-GJL-200
Installation:	
Maximum ambient temperature:	40 °C
Pump outlet:	DN 150
Maximum installation depth:	25 m
Liquid:	
Liquid temperature range:	0 .. 40 °C
Density:	998.2 kg/m ³
Min. pH-value:	4
Electrical data:	
Rated power - P2:	30 kW
Mains frequency:	50 Hz
Rated voltage:	3 x 380-415 V
Voltage tolerance:	+5/-5 %
Max starts per. hour:	18
Rated current:	59 A
Rated current at 3/4 load:	46 A
Rated current at 1/2 load:	34 A
Cos phi - power factor:	0.86
Cos phi - p.f. at 3/4 load:	0.828
Cos phi - p.f. at 1/2 load:	0.751
Rated speed:	2850 rpm
Motor efficiency at full load:	89.7 %
Motor efficiency at 3/4 load:	89.1 %
Motor efficiency at 1/2 load:	87.2 %
Number of poles:	2
Start. method:	star/delta
Enclosure class (IEC 34-5):	IP68
Insulation class (IEC 85):	F
Explosion proof:	no
Length of cable:	10 m
Cable type:	TP90/TP90
Cable size:	7X10.0MM2+6X1.5MM2
Controls:	
Seal sensor:	Y
Sensor type:	BI-METAL
Others:	
Net weight:	452 kg

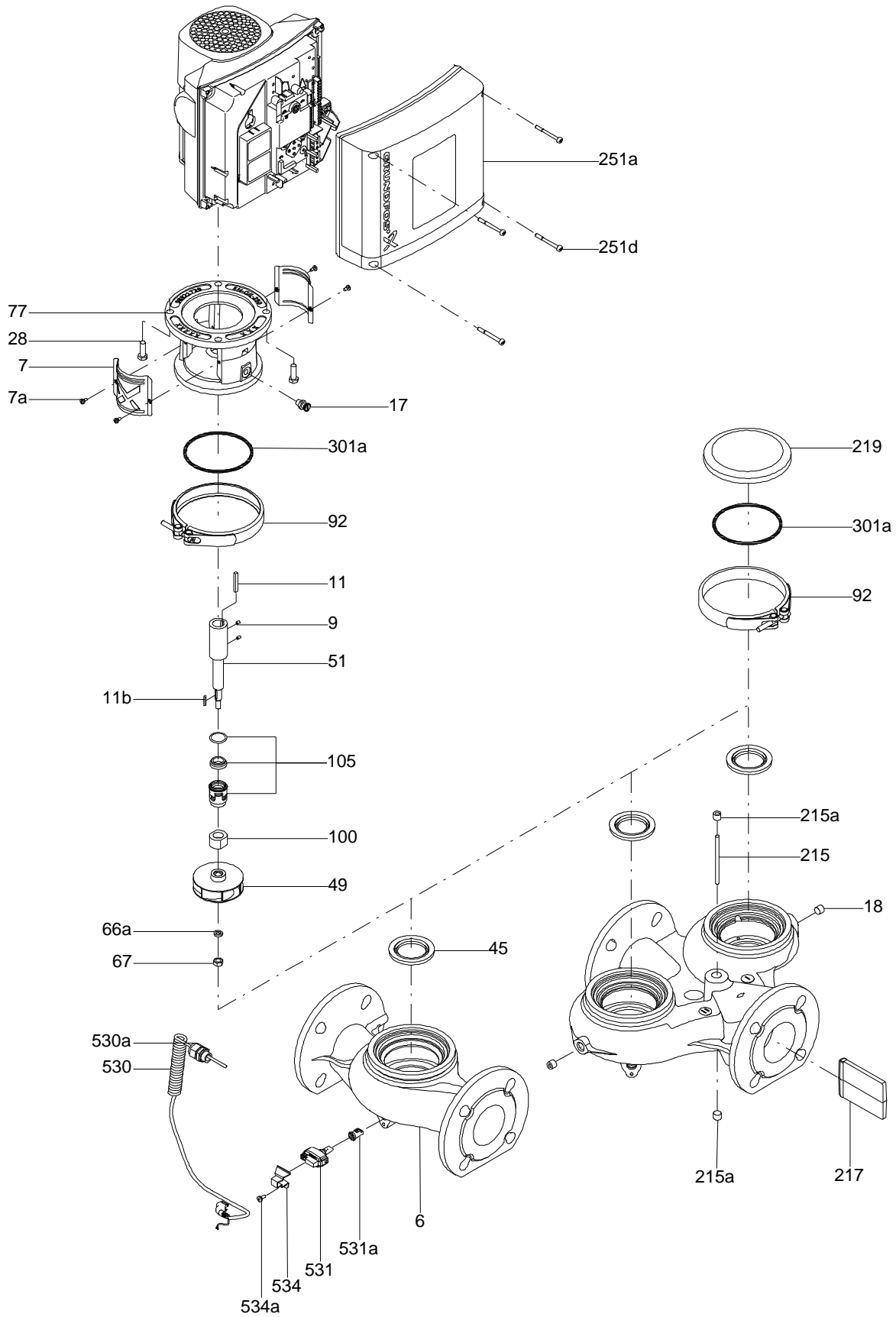


On request DWK.E.10.150.300.5.1D 50 Hz



Note! All units are in [mm] unless others are stated.
Disclaimer: This simplified dimensional drawing does not show all details.

Exploded view

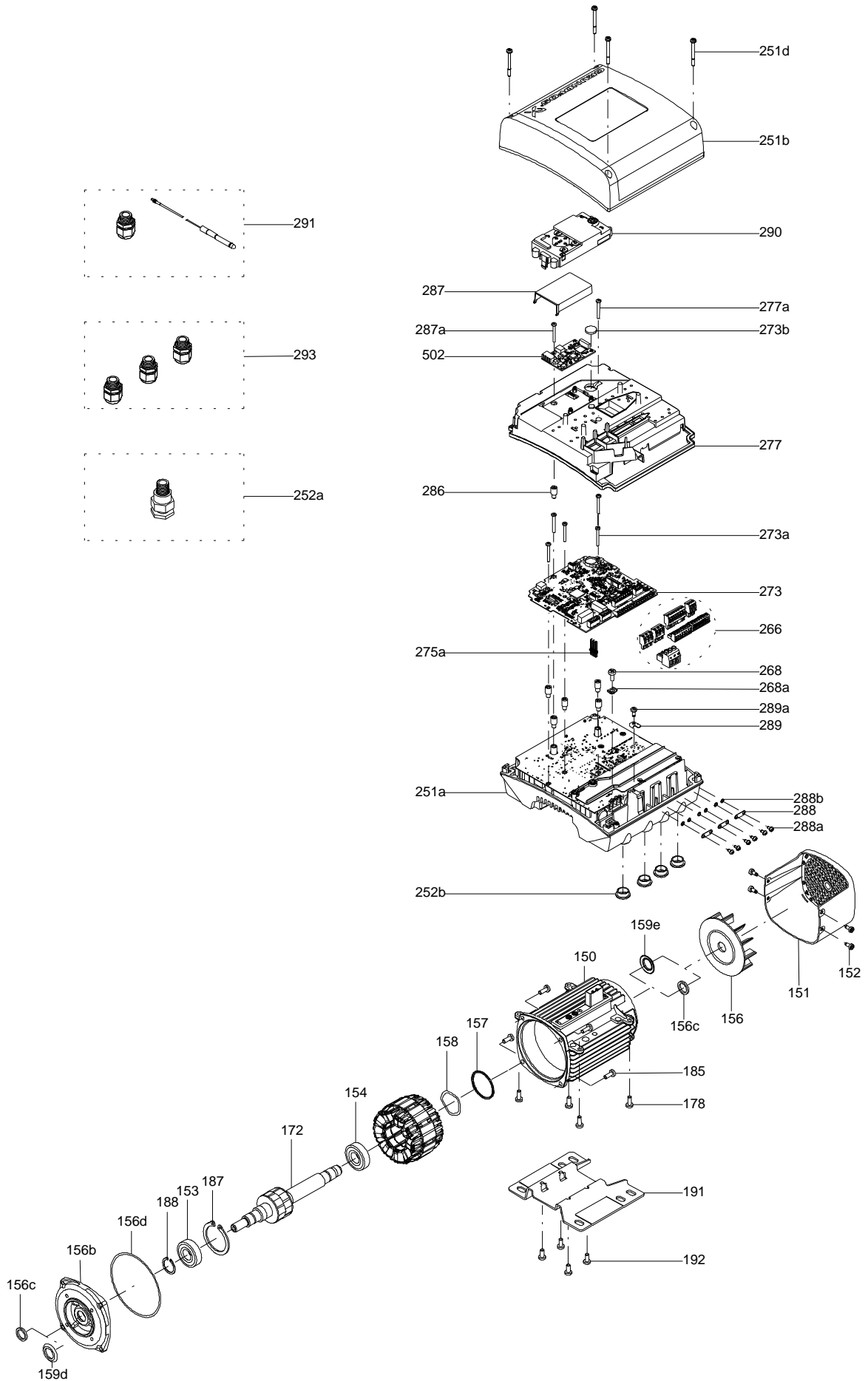


Sectional drawing (TM058200 for TPE2,TPE3)



TM058200

Exploded view (TM057026 for MGE model H/I)



**Parts list DWK.E.10.150.300.5.1D, Product No. On request
Valid from 1.5.2009 (0918)**

Pos	Description	Annotation	Données de classification	Référence	Quantité	Unité
50	Pump housing				1	pcs
55	Frame				1	pcs
60	Bearing housing				1	pcs
84a	Strainer				1	pcs
151	Bracket				1	pcs
190d	Eyebolt				1	pcs

Disclaimer: The information about the Grundfos pump in this document may be outdated.

Data may be subject to alterations without further notice.

Please contact us to verify the data above is still accurate/up-to-date.

All information is copyright Grundfos.



info@lenntech.com

<https://www.lenntech.com>

tel. +31 152 610 900

fax. +31 152 616 289