

DWK.O.10.100.37.5.0D.R Grundfos pump 96922731




Thank you for your interest in our products. Please contact us for more information, or visit our website

<https://www.lenntech.com/grundfos/DWK000/96922731/DWK-O-10-100-37-5-0D-R.html>

info@lenntech.com

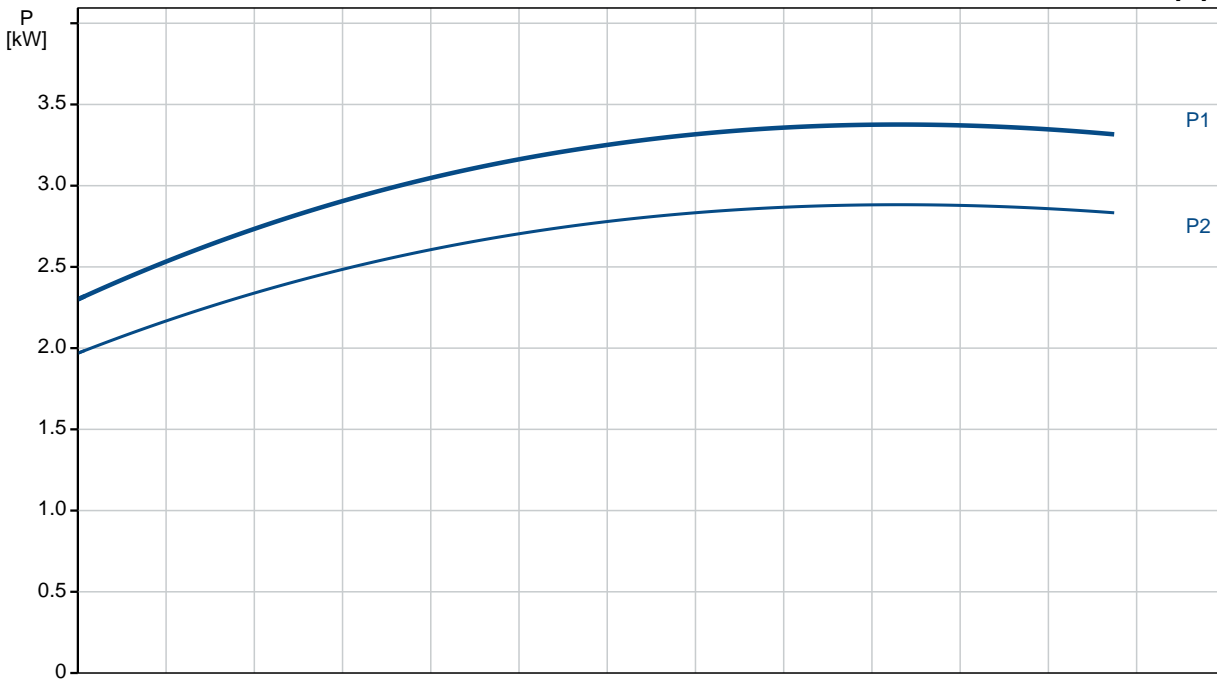
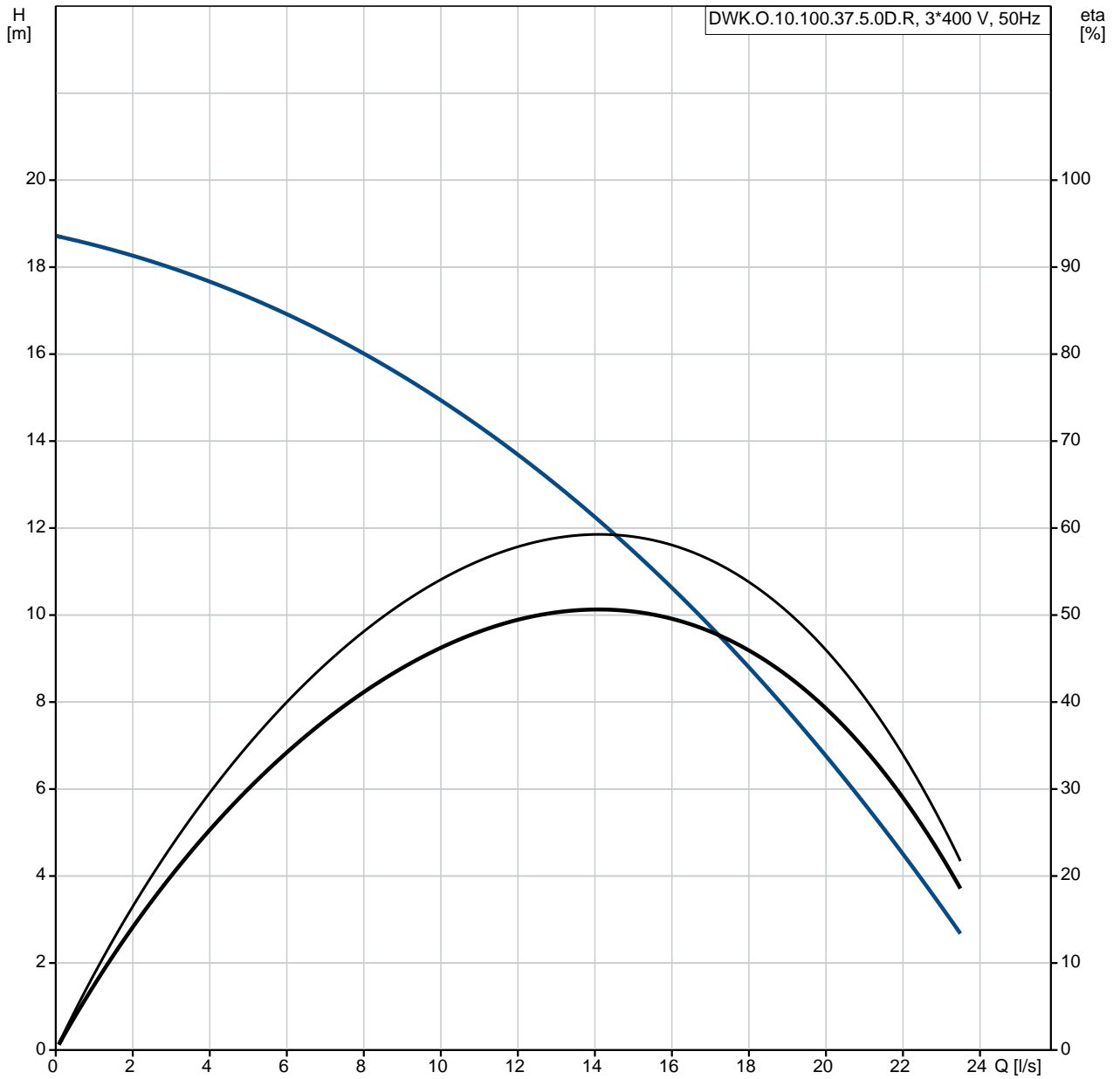
tel. +31 152 610 900

fax. +31 152 616 289

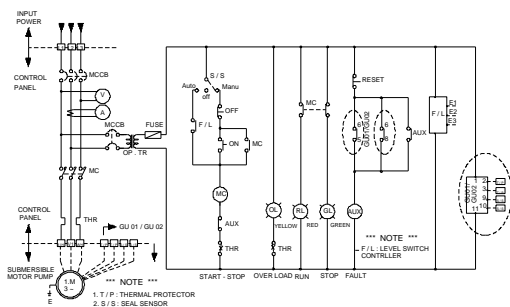
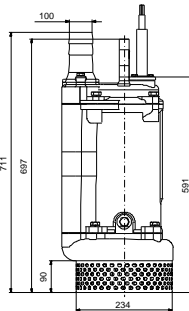
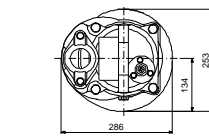
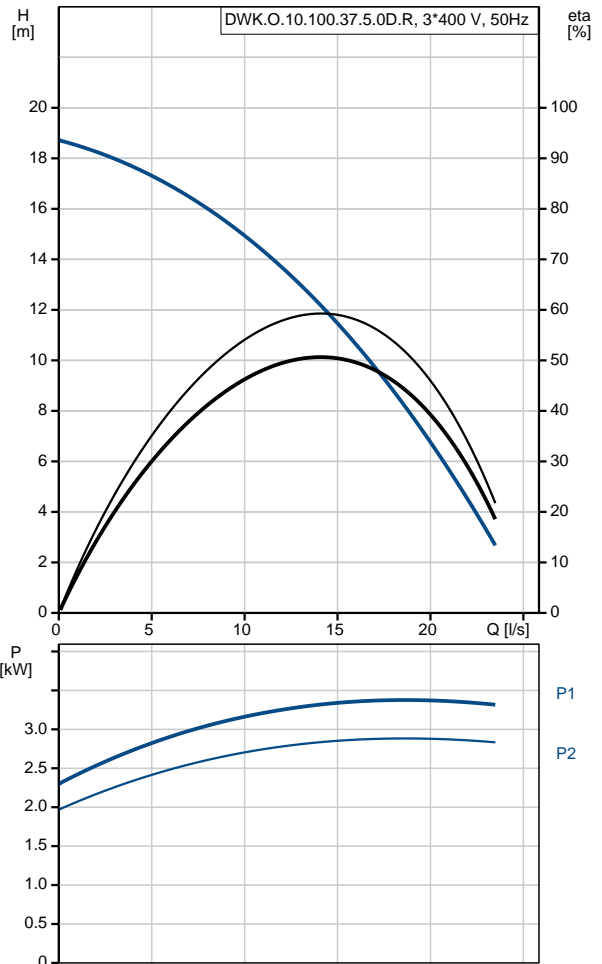
Position	Qty.	Description
	1	<p data-bbox="320 163 608 197">DWK.O.10.100.37.5.0D.R</p>  <p data-bbox="320 486 600 519">Product No.: On request</p> <p data-bbox="320 544 654 577">Submersible Contractor Pump</p> <p data-bbox="320 602 1270 636">Grundfos DWK pump is a submersible pump for dewatering and drainage applications.</p> <p data-bbox="320 660 1085 752">The pump is suitable for pumping -water with dirt from underground drainage pits -water with sand from construction sites, excavation sites, tunnels etc.</p> <p data-bbox="320 777 1340 810">The compact design makes the pump suitable for both temporary and permanent installation.</p> <p data-bbox="320 835 1449 898">The pump is cast iron, with vertical discharge port and integrated submersible 3-phase totally enclosed motor in insulation class F (155°C).</p> <p data-bbox="320 922 1393 985">The pump has a rise pipe, a double mechanical seal and a high chrome stainless steel semi-open impeller type for maintained performance.</p> <p data-bbox="320 1010 1393 1072">The pump is equipped with an integrated Ti-circle for motor protection in case of overheating. The pump can operate independently without monitoring equipment.</p> <p data-bbox="320 1097 1078 1131">The pump is fitted with suction strainer, lifting handle and 10 m cable.</p> <p data-bbox="320 1155 919 1189">The pump is equipped with a hose coupling discharge.</p> <p data-bbox="320 1249 432 1283">Controls:</p> <p data-bbox="320 1283 702 1317">Seal sensor: N</p> <p data-bbox="320 1341 405 1375">Liquid:</p> <p data-bbox="320 1375 788 1408">Liquid temperature range: 0 .. 40 °C</p> <p data-bbox="320 1408 817 1442">Density: 998.2 kg/m³</p> <p data-bbox="320 1467 443 1500">Technical:</p> <p data-bbox="320 1500 775 1534">Actual impeller diameter: 137 mm</p> <p data-bbox="320 1534 702 1568">Type of impeller: O</p> <p data-bbox="320 1568 762 1601">Maximum particle size: 10 mm</p> <p data-bbox="320 1601 775 1635">Primary shaft seal: SIC-SIC</p> <p data-bbox="320 1635 912 1668">Secondary shaft seal: CERAMIC-CARBON</p> <p data-bbox="320 1668 743 1702">Max. hydraulic efficiency: 50 %</p> <p data-bbox="320 1702 756 1736">Curve tolerance: NONE</p> <p data-bbox="320 1760 437 1794">Materials:</p> <p data-bbox="320 1794 919 1845">Pump housing: Cast iron EN1561 EN-GJL-200</p> <p data-bbox="320 1845 984 1897">Impeller: high-chrome stainless steel DIN W.-Nr. HI-CR</p> <p data-bbox="320 1897 919 1948">Motor: Cast iron EN1561 EN-GJL-200</p> <p data-bbox="320 1973 461 2007">Installation:</p> <p data-bbox="320 2007 748 2040">Maximum ambient temperature: 40 °C</p> <p data-bbox="320 2040 769 2074">Pump outlet: DN 100</p> <p data-bbox="320 2074 740 2107">Maximum installation depth: 25 m</p>

Position	Qty.	Description
		<p>Electrical data:</p> <p>Rated power - P2: 3.7 kW</p> <p>Mains frequency: 50 Hz</p> <p>Rated voltage: 3 x 380-415 V</p> <p>Voltage tolerance: +5/-5 %</p> <p>Max starts per. hour: 30</p> <p>Rated current: 7.6 A</p> <p>Rated current at 3/4 load: 5.9 A</p> <p>Rated current at 1/2 load: 4.1 A</p> <p>Cos phi - power factor: 0.91</p> <p>Cos phi - p.f. at 3/4 load: 0.9</p> <p>Cos phi - p.f. at 1/2 load: 0.85</p> <p>Rated speed: 2850 rpm</p> <p>Motor efficiency at full load: 84.5 %</p> <p>Motor efficiency at 3/4 load: 85.5 %</p> <p>Motor efficiency at 1/2 load: 85.6 %</p> <p>Number of poles: 2</p> <p>Start. method: direct-on-line</p> <p>Enclosure class (IEC 34-5): IP68</p> <p>Insulation class (IEC 85): F</p> <p>Explosion proof: no</p> <p>Length of cable: 10 m</p> <p>Cable type: TP90/TP90</p> <p>Others:</p> <p>Net weight: 81 kg</p>

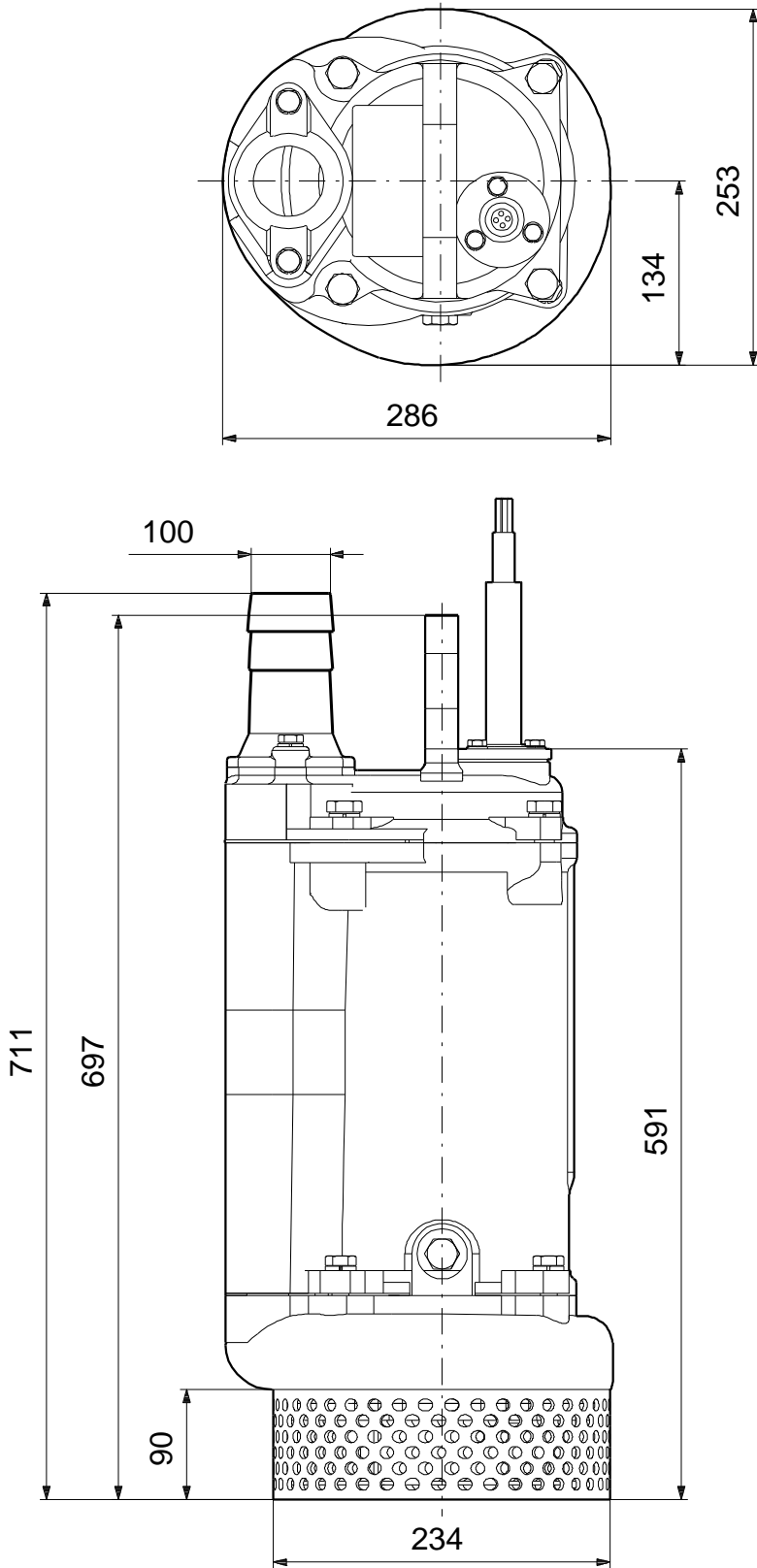
On request DWK.O.10.100.37.5.0D.R 50 Hz



Description	Value
General information:	
Product name:	DWK.O.10.100.37.5.0D.R
Product No:	On request
EAN number:	On request
Technical:	
Max flow:	18.3 l/s
Head min:	9.3 m
Head max:	18.1 m
Actual impeller diameter:	137 mm
Type of impeller:	O
Maximum particle size:	10 mm
Primary shaft seal:	SIC-SIC
Secondary shaft seal:	CERAMIC-CARBON
Max. hydraulic efficiency:	50 %
Curve tolerance:	NONE
Materials:	
Pump housing:	Cast iron EN1561 EN-GJL-200
Impeller:	high-chrome stainless steel DIN W.-Nr. HI-CR
Motor:	Cast iron EN1561 EN-GJL-200
Installation:	
Maximum ambient temperature:	40 °C
Pump outlet:	DN 100
Maximum installation depth:	25 m
Liquid:	
Liquid temperature range:	0 .. 40 °C
Density:	998.2 kg/m ³
Min. pH-value:	4
Electrical data:	
Rated power - P2:	3.7 kW
Mains frequency:	50 Hz
Rated voltage:	3 x 380-415 V
Voltage tolerance:	+5/-5 %
Max starts per. hour:	30
Rated current:	7.6 A
Rated current at 3/4 load:	5.9 A
Rated current at 1/2 load:	4.1 A
Cos phi - power factor:	0.91
Cos phi - p.f. at 3/4 load:	0.9
Cos phi - p.f. at 1/2 load:	0.85
Rated speed:	2850 rpm
Motor efficiency at full load:	84.5 %
Motor efficiency at 3/4 load:	85.5 %
Motor efficiency at 1/2 load:	85.6 %
Number of poles:	2
Start. method:	direct-on-line
Enclosure class (IEC 34-5):	IP68
Insulation class (IEC 85):	F
Explosion proof:	no
Length of cable:	10 m
Cable type:	TP90/TP90
Cable size:	4X1.5MM2
Controls:	
Seal sensor:	N
Sensor type:	N
Others:	
Net weight:	81 kg

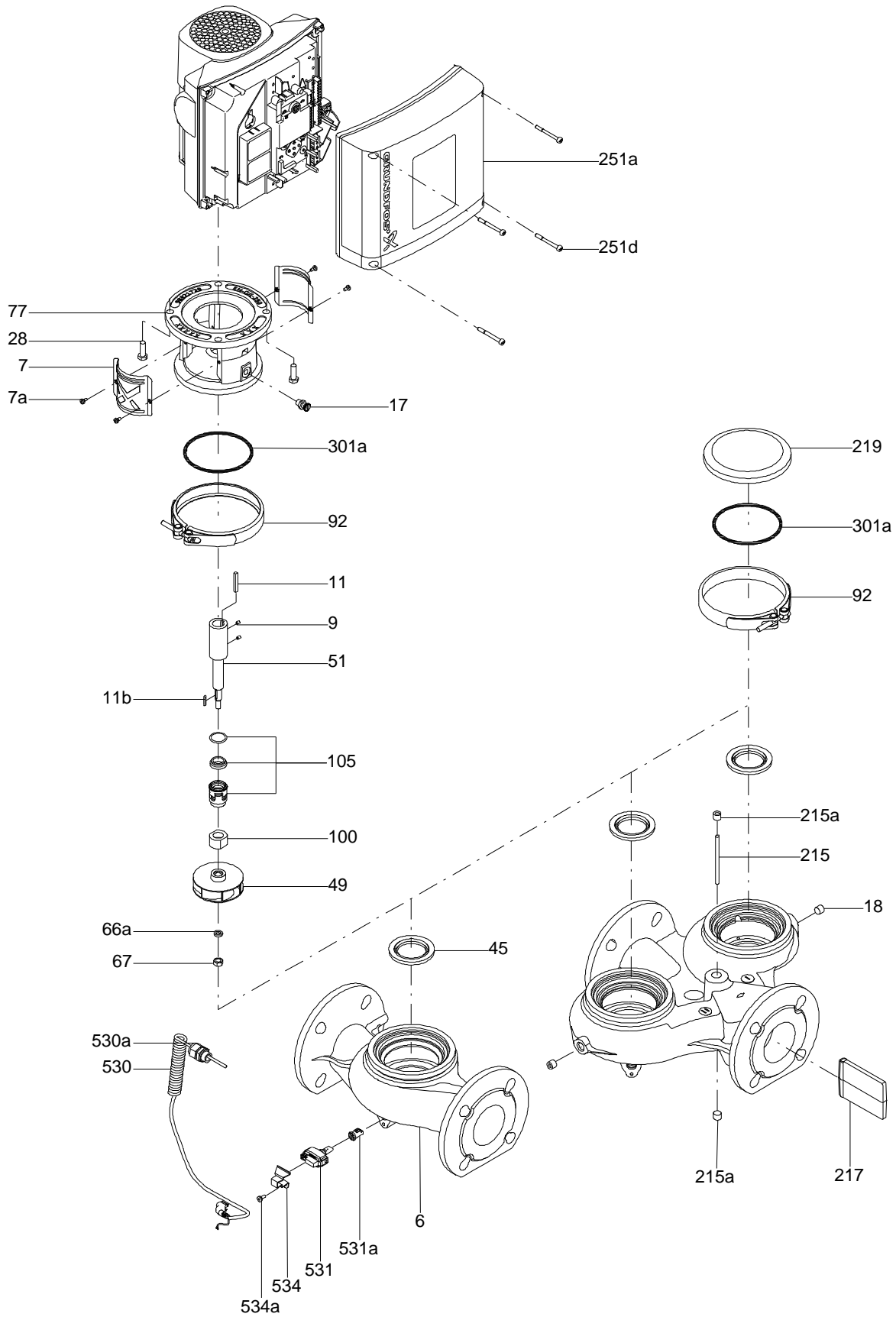


On request DWK.O.10.100.37.5.0D.R 50 Hz

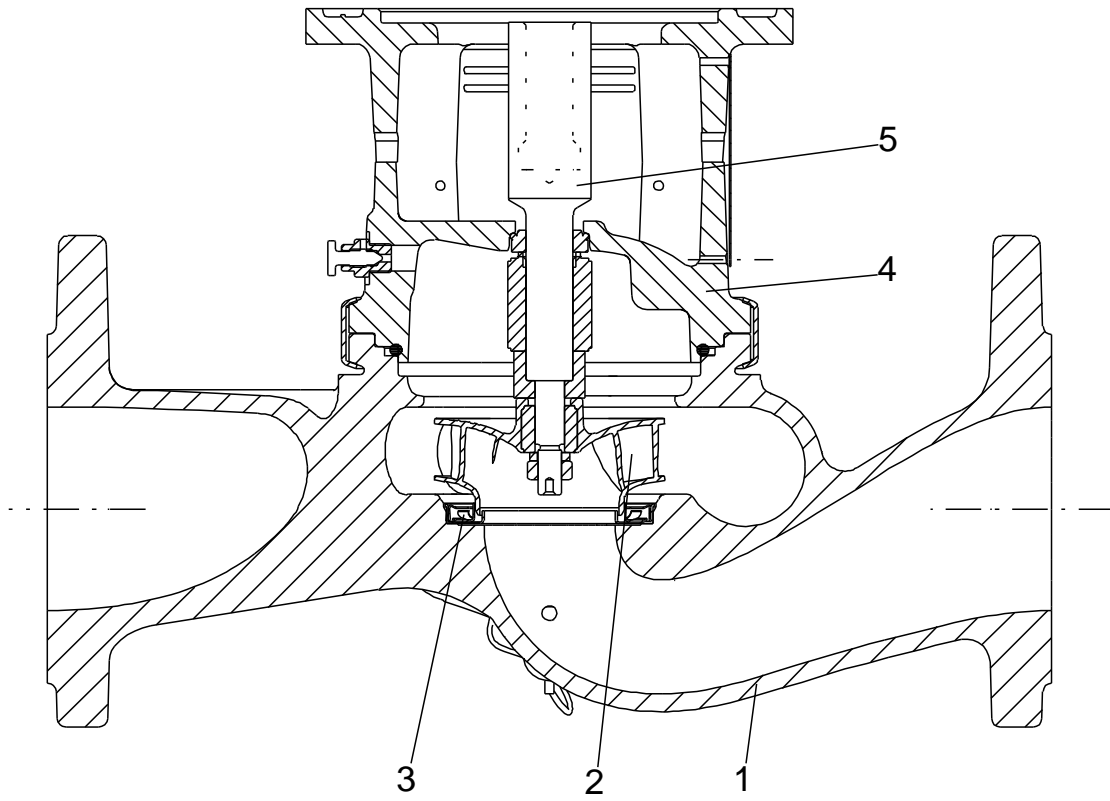


Note! All units are in [mm] unless others are stated.
Disclaimer: This simplified dimensional drawing does not show all details.

Exploded view

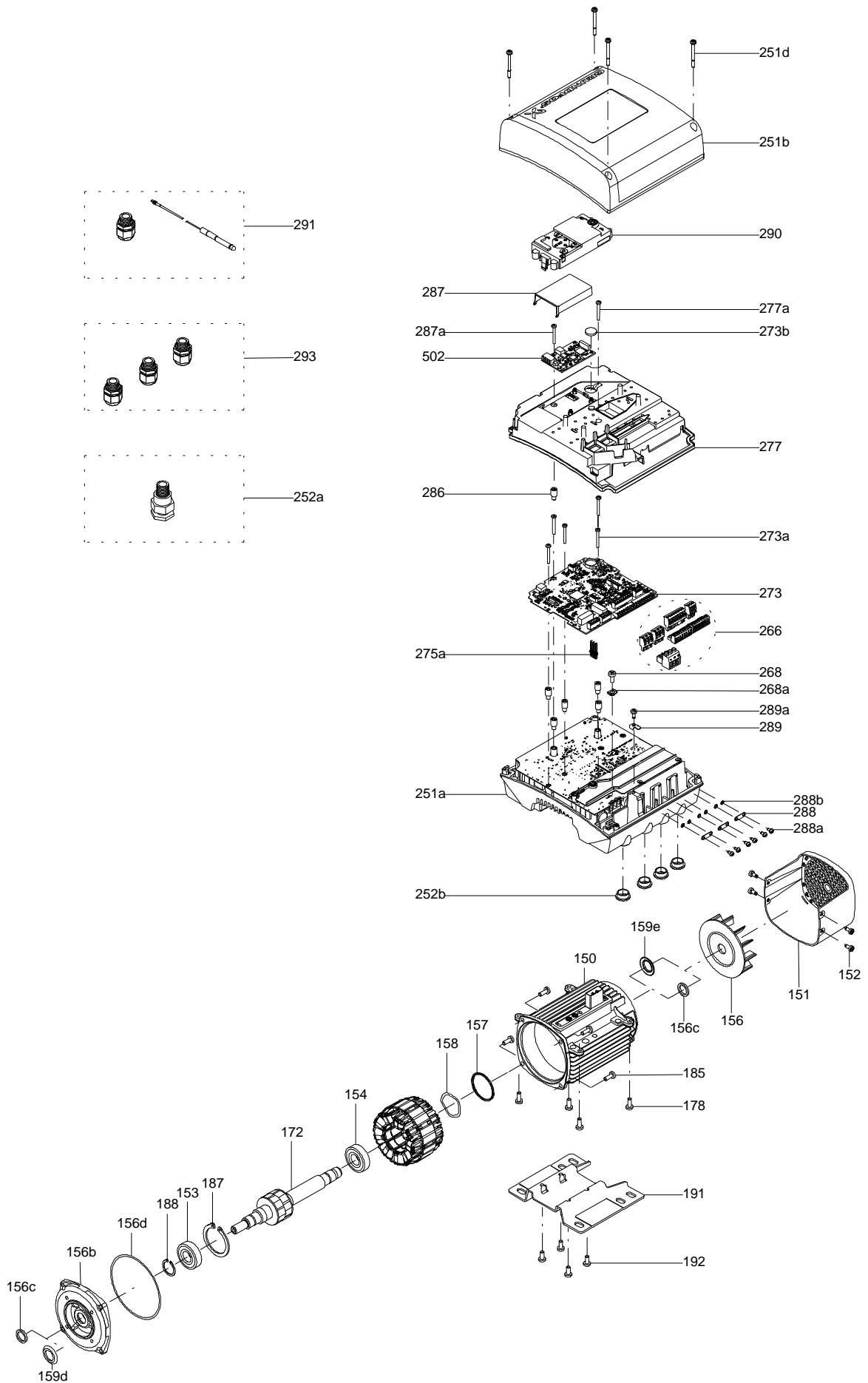


Sectional drawing (TM058200 for TPE2,TPE3)



TM058200

Exploded view (TM057026 for MGE model H/I)



**Parts list DWK.O.10.100.37.5.0D.R, Product No. On request
Valid from 1.5.2009 (0918)**

Pos	Description	Annotation	Données de classification	Référence	Quantité	Unité
-	O-ring				1	pcs
35a	O-ring				1	
37b	O-ring				1	
37e	Rubber				1	
39	O-ring				1	
39e	Rubber				1	
109	O-ring				1	
-	Hose				1	pcs
13	Hose coupling				1	
66	Spring lock washer				4	
181a	Hex head bolt				4	
-	Cable				1	pcs
	Hex head screw				1	
	Hex head screw				1	
	Nut				1	
	Nut				1	
	Clamp				1	
	Rubber bush				1	
	Cable clamp				1	
168	Cable gland				1	
181	Cable				1	
181a	Hex head bolt				2	
188b	Lock washer				2	
198	Rubber bush				2	
198a	Washer				2	
	Motor protector				1	pcs
-	Motor assembly				1	pcs
	Bolt				1	
48	Stator				1	
55	Motor housing				1	
59	Bearing cover				1	
60	Bearing housing				1	
60a	Hex head screw				3	
60b	Spring lock washer				3	
102	Stop ring				1	
151	Bracket				1	
153	Ball bearing				1	
153	Ball bearing				1	
154a	Insulation plate				1	
172	Shaft w/rotor				1	
178	Hex head screw				2	
178a	Lock washer				2	
182	Hex socket head cap screw		Length (mm): 20 Thread: M8		4	
182a	Spring lock washer				4	
183	Hex head screw				5	
183a	Spring lock washer				5	
184	Hex head screw				4	
184a	Spring lock washer				4	
190	Lifting device				1	
193	Plug				2	
-	Hydraulic assembly				1	pcs
9a	Key				1	
46	Sealing part				1	
49	Impeller				1	
50	Pump housing				1	
66	Spring lock washer				1	
84a	Strainer				1	
84b	Hex head screw				3	

Pos	Description	Annotation	Données de classification	Référence	Quantité	Unité
84c	Lock washer				3	
105	Mechanical seal cpl.				1	
105b	Pan head screw				3	
188	Cap nut				1	
188a	Hex head screw				3	
188b	Lock washer				3	
189	Suction cover				1	

Disclaimer: The information about the Grundfos pump in this document may be outdated.

Data may be subject to alterations without further notice.

Please contact us to verify the data above is still accurate/up-to-date.

All information is copyright Grundfos.



info@lenntech.com

<https://www.lenntech.com>

tel. +31 152 610 900

fax. +31 152 616 289