

CMB-SP 3-47 I-C-A-C-B-A Grundfos pump 98507573




Thank you for your interest in our products. Please contact us for more information, or visit our website

<https://www.lenntech.com/grundfos/CMBSP/98507573/CMB-SP-3-47-I-C-A-C-B-A.html>

info@lenntech.com

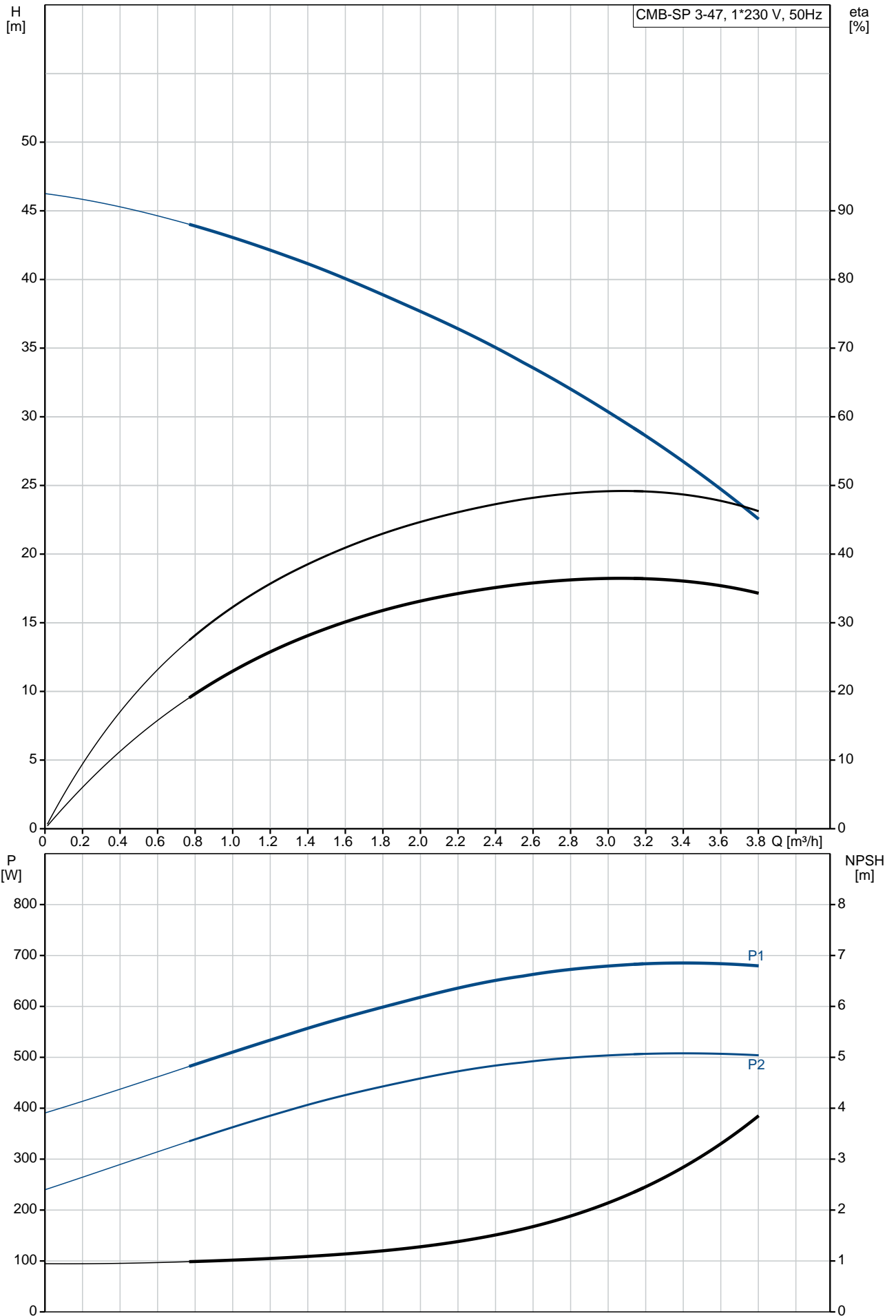
tel. +31 152 610 900

fax. +31 152 616 289

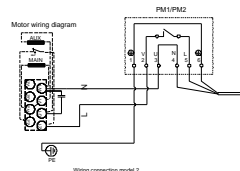
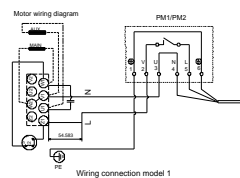
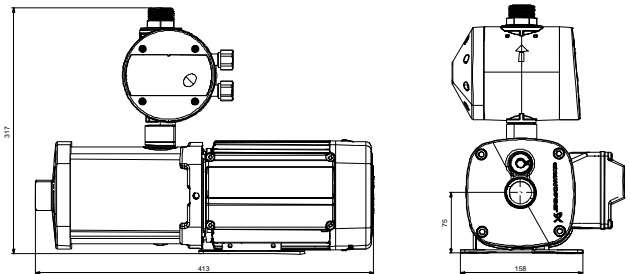
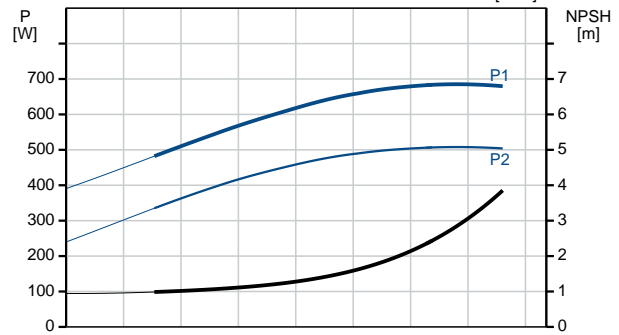
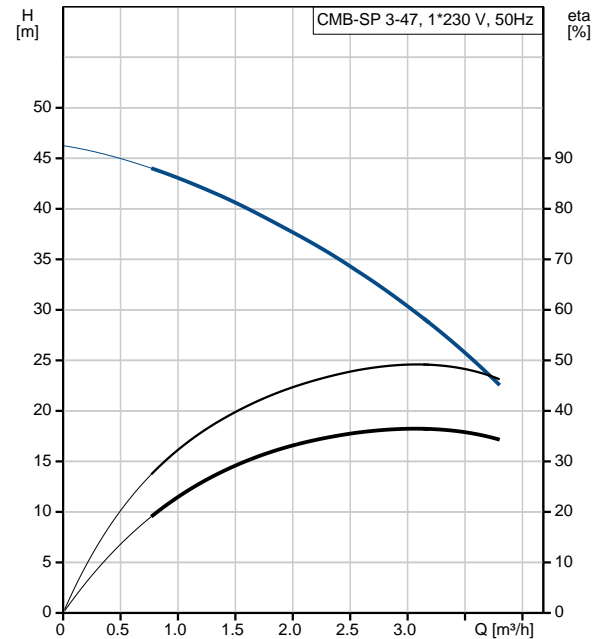
Position	Qty.	Description																												
	1	<p data-bbox="322 163 619 194">CMB-SP 3-47 I-C-A-C-B-A</p> <div data-bbox="416 255 596 427" style="text-align: center;">  </div> <p data-bbox="322 483 600 515">Product No.: On request</p> <p data-bbox="322 544 1276 752">The Grundfos CM Booster self-priming pump with PM2 pressure manager is a compact booster solution for water supply in domestic applications. The pressure booster unit consists of a Grundfos CM self-priming pump and a Grundfos PM2 pressure manager. The pressure manager allows the pump to start and stop automatically according to demand and protects the pump from dry running.</p> <p data-bbox="322 752 1158 871">The CM Booster self-priming pump can create a suction lift of up to 8 m, and it is very easy to install. When the booster has been connected to the pipework, just plug it into a socket, and the system is operational.</p> <p data-bbox="322 929 421 960">Features</p> <ul data-bbox="322 960 740 1167" style="list-style-type: none"> • compact • easy installation • self-priming up to 8 m • automatic resetting of alarms • dry-running protection • anti-cycling (leakage detection) • maximum continuous operating time. <p data-bbox="322 1227 456 1258">Applications</p> <p data-bbox="322 1258 1295 1317">The Grundfos CM Booster self-priming pump with PM2 pressure manager is mainly used for domestic and light commercial water supply or booster systems.</p> <p data-bbox="322 1404 405 1435">Liquid:</p> <table data-bbox="322 1435 817 1554"> <tr> <td>Pumped liquid:</td> <td>Water</td> </tr> <tr> <td>Liquid temperature range:</td> <td>0 .. 60 °C</td> </tr> <tr> <td>Liquid temperature during operation:</td> <td>20 °C</td> </tr> <tr> <td>Density:</td> <td>998.2 kg/m³</td> </tr> </table> <p data-bbox="322 1583 443 1615">Technical:</p> <table data-bbox="322 1615 880 1821"> <tr> <td>Rated flow:</td> <td>3 m³/h</td> </tr> <tr> <td>Rated head:</td> <td>34.9 m</td> </tr> <tr> <td>Primary shaft seal:</td> <td>AVBE</td> </tr> <tr> <td>Approvals and markings:</td> <td>CE,C-TICK</td> </tr> <tr> <td>Curve tolerance:</td> <td>ISO9906:2012 3B</td> </tr> <tr> <td>Self-priming:</td> <td>4 m</td> </tr> <tr> <td>Start pressure:</td> <td>PM1 - 2.2 bar</td> </tr> </table> <p data-bbox="322 1850 437 1881">Materials:</p> <table data-bbox="322 1881 887 2087"> <tr> <td>Pump housing:</td> <td>Stainless steel DIN W.-Nr. 1.4301 AISI 304</td> </tr> <tr> <td>Impeller:</td> <td>Stainless steel DIN W.-Nr. 1.4301 AISI 304</td> </tr> <tr> <td>Rubber:</td> <td>EPDM</td> </tr> </table>	Pumped liquid:	Water	Liquid temperature range:	0 .. 60 °C	Liquid temperature during operation:	20 °C	Density:	998.2 kg/m ³	Rated flow:	3 m ³ /h	Rated head:	34.9 m	Primary shaft seal:	AVBE	Approvals and markings:	CE,C-TICK	Curve tolerance:	ISO9906:2012 3B	Self-priming:	4 m	Start pressure:	PM1 - 2.2 bar	Pump housing:	Stainless steel DIN W.-Nr. 1.4301 AISI 304	Impeller:	Stainless steel DIN W.-Nr. 1.4301 AISI 304	Rubber:	EPDM
Pumped liquid:	Water																													
Liquid temperature range:	0 .. 60 °C																													
Liquid temperature during operation:	20 °C																													
Density:	998.2 kg/m ³																													
Rated flow:	3 m ³ /h																													
Rated head:	34.9 m																													
Primary shaft seal:	AVBE																													
Approvals and markings:	CE,C-TICK																													
Curve tolerance:	ISO9906:2012 3B																													
Self-priming:	4 m																													
Start pressure:	PM1 - 2.2 bar																													
Pump housing:	Stainless steel DIN W.-Nr. 1.4301 AISI 304																													
Impeller:	Stainless steel DIN W.-Nr. 1.4301 AISI 304																													
Rubber:	EPDM																													

Position	Qty.	Description
		<p>Installation: Maximum ambient temperature: 55 °C Flange standard: WHITWORTH THREAD RP</p> <p>Electrical data: Rated power - P2: 0.5 kW Mains frequency: 50 Hz Rated voltage: 1 x 220-240 V Maximum current consumption: 3.1-2.8 A Rated speed: 2730-2740 rpm Enclosure class (IEC 34-5): IP55 Insulation class (IEC 85): F Type of cable plug: SCHUKO Mains cable: 1.5 m</p> <p>Others: Net weight: 15.4 kg Gross weight: 20.7 kg</p>

On request CMB-SP 3-47 I-C-A-C-B-A 50 Hz

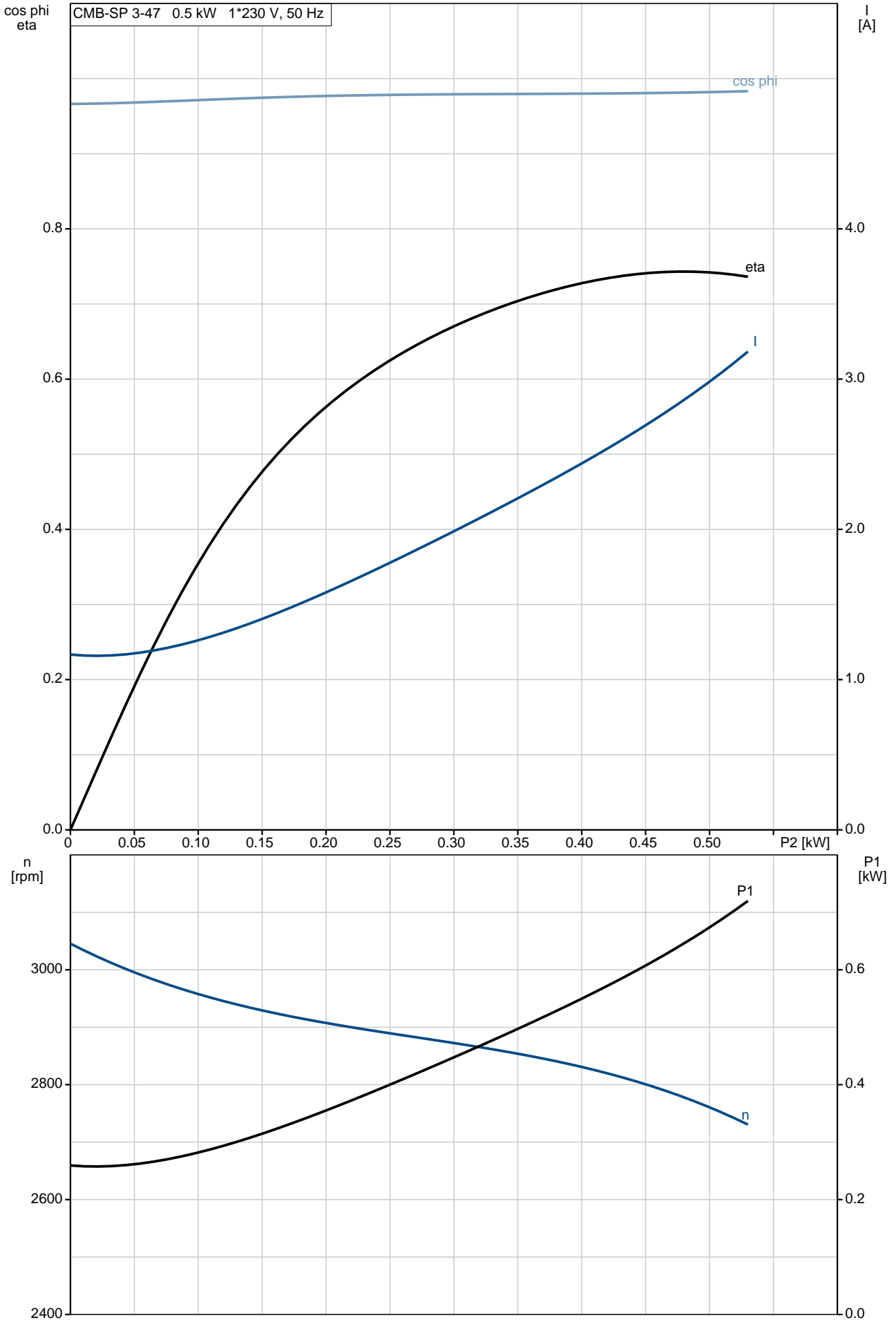


Description	Value
General information:	
Product name:	CMB-SP 3-47 I-C-A-C-B-A
Product No:	On request
EAN number:	On request
Technical:	
Rated flow:	3 m³/h
Rated head:	34.9 m
Impellers:	5
Primary shaft seal:	AVBE
Approvals and markings:	CE, C-TICK
Curve tolerance:	ISO9906:2012 3B
Model:	A
Self-priming:	4 m
Start pressure:	PM1 - 2.2 bar
Materials:	
Pump housing:	Stainless steel DIN W.-Nr. 1.4301 AISI 304
Impeller:	Stainless steel DIN W.-Nr. 1.4301 AISI 304
Rubber:	EPDM
Installation:	
Maximum ambient temperature:	55 °C
Flange standard:	WHITWORTH THREAD RP
Liquid:	
Pumped liquid:	Water
Liquid temperature range:	0 .. 60 °C
Liquid temperature during operation:	20 °C
Density:	998.2 kg/m³
Electrical data:	
Rated power - P2:	0.5 kW
Mains frequency:	50 Hz
Rated voltage:	1 x 220-240 V
Maximum current consumption:	3.1-2.8 A
p max system:	10 bar
Rated speed:	2730-2740 rpm
Enclosure class (IEC 34-5):	IP55
Insulation class (IEC 85):	F
Motor protec:	TP 211
Type of cable plug:	SCHUKO
Mains cable:	1.5 m
Others:	
Net weight:	15.4 kg
Gross weight:	20.7 kg

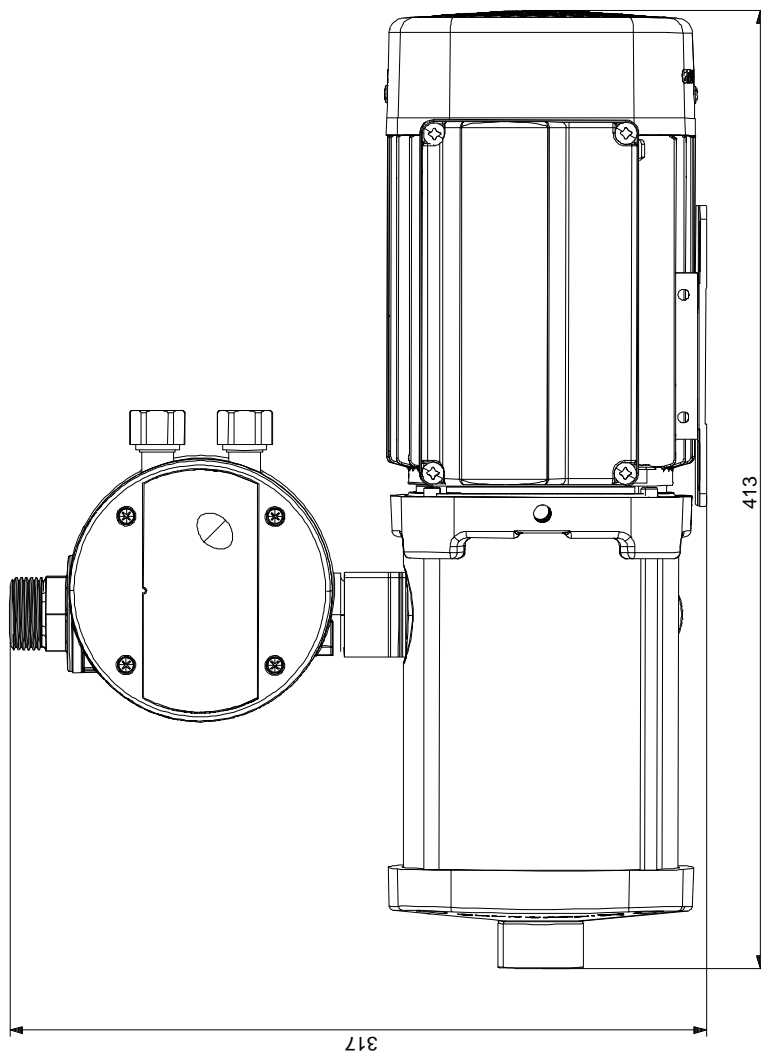
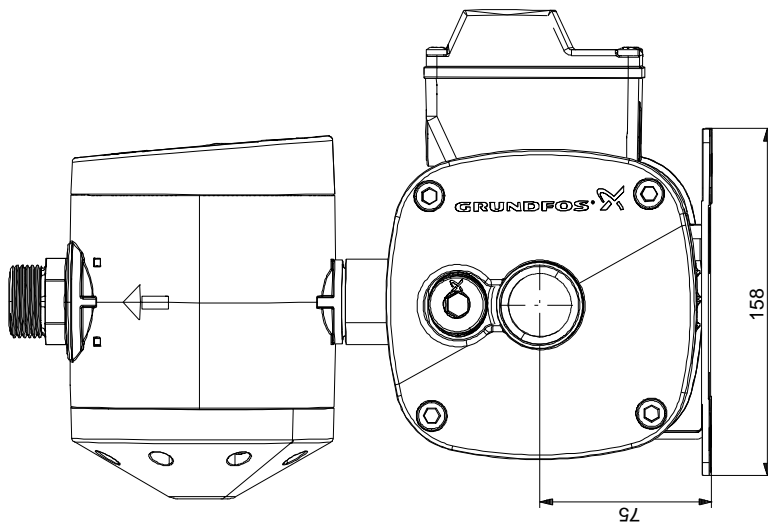


- Australian plug: IEC type I, AS/NZS3112, 1.5 m
- Schuko plug: IEC Type E&F, CEE7/7, 1.5 m
- US plug: IEC type B, NEMA 5-15P, 1.5 m
- NO PLUG, 1.5 m

On request CMB-SP 3-47 I-C-A-C-B-A 50 Hz

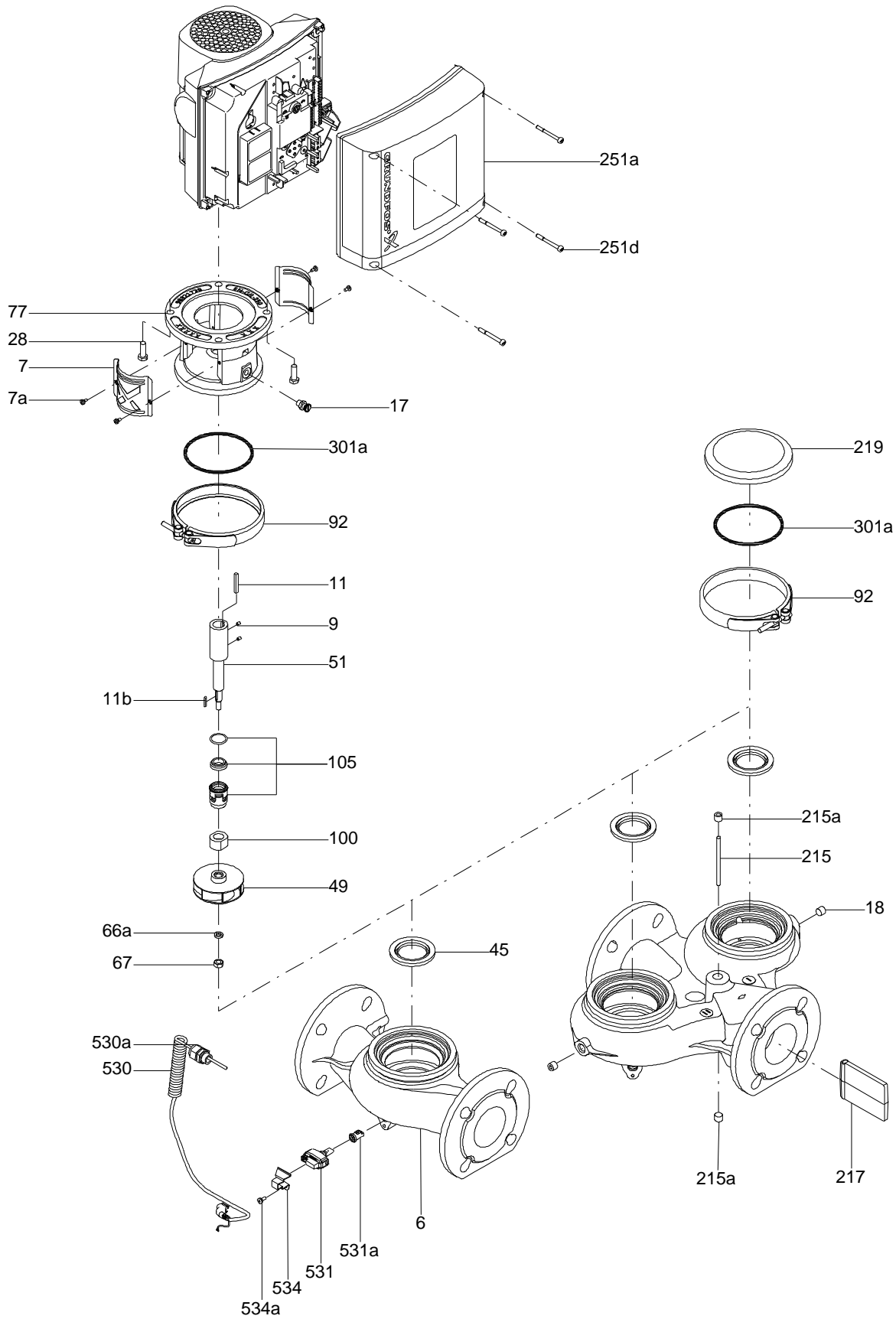


On request CMB-SP 3-47 I-C-A-C-B-A 50 Hz



Note! All units are in [mm] unless others are stated.
Disclaimer: This simplified dimensional drawing does not show all details.

Exploded view

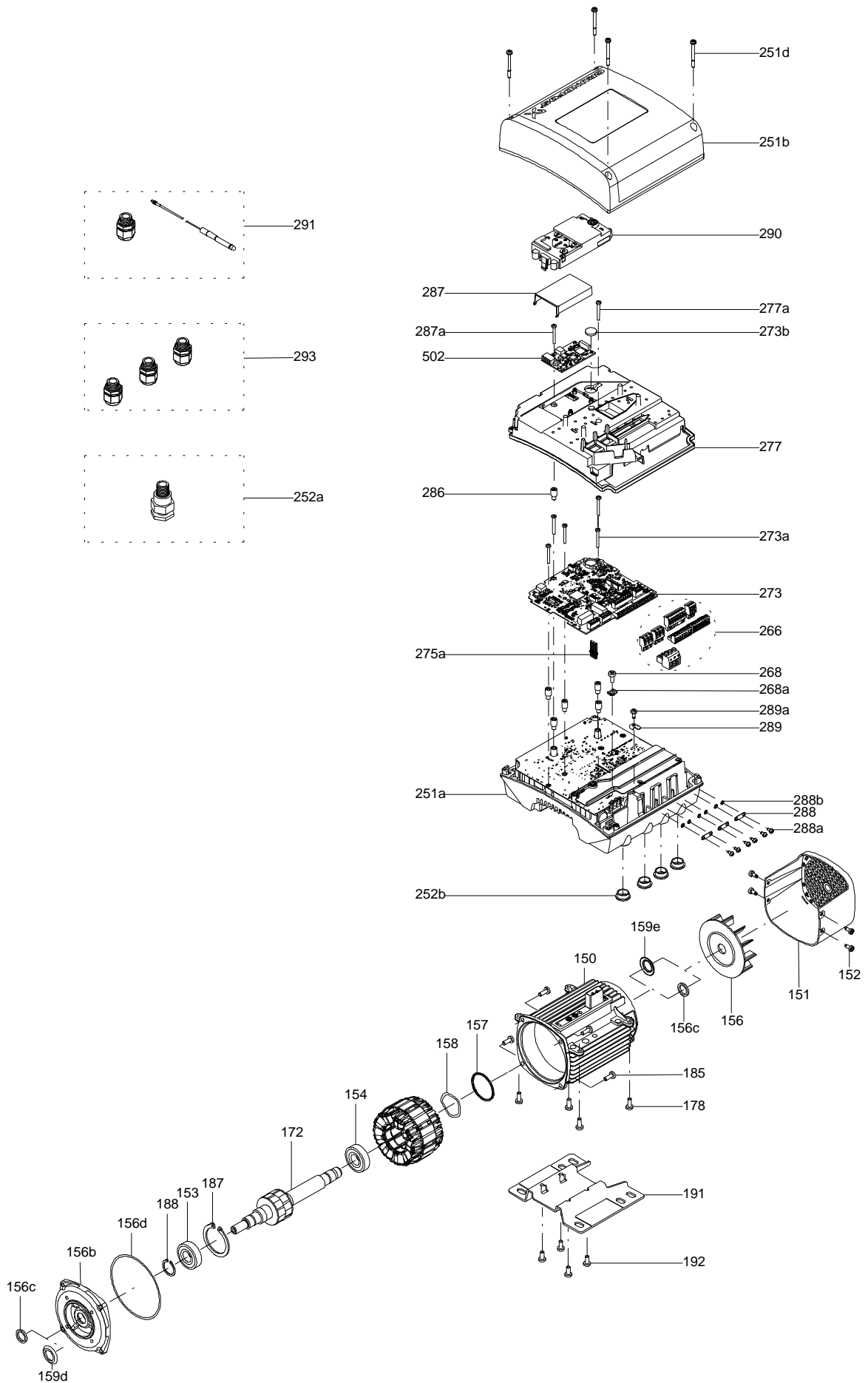


Sectional drawing (TM058200 for TPE2,TPE3)



TM058200

Exploded view (TM057026 for MGE model H/I)



Parts list CMB-SP 3-47, Product No. On request
Valid from 3.11.2010 (1044)

Pos	Description	Annotation	Données de classification	Référence	Quantité	Unité
	Cable tie				1	pcs
37b	O-ring				1	pcs
72	Nameplate				1	pcs
168	Cable gland				1	pcs
181	Cable w/plug				1	pcs
181a	Motor cable				1	pcs

Disclaimer: The information about the Grundfos pump in this document may be outdated.

Data may be subject to alterations without further notice.

Please contact us to verify the data above is still accurate/up-to-date.

All information is copyright Grundfos.



info@lenntech.com

<https://www.lenntech.com>

tel. +31 152 610 900

fax. +31 152 616 289