

## SP9-11NE Rp2 4"3X380-415/50 2.2kW Grundfos pump 98730831




Thank you for your interest in our products. Please contact us for more information, or visit our website

<https://www.lenntech.com/grundfos/SPNE09/98730831/SP-9-11NE.html>

[info@lenntech.com](mailto:info@lenntech.com)

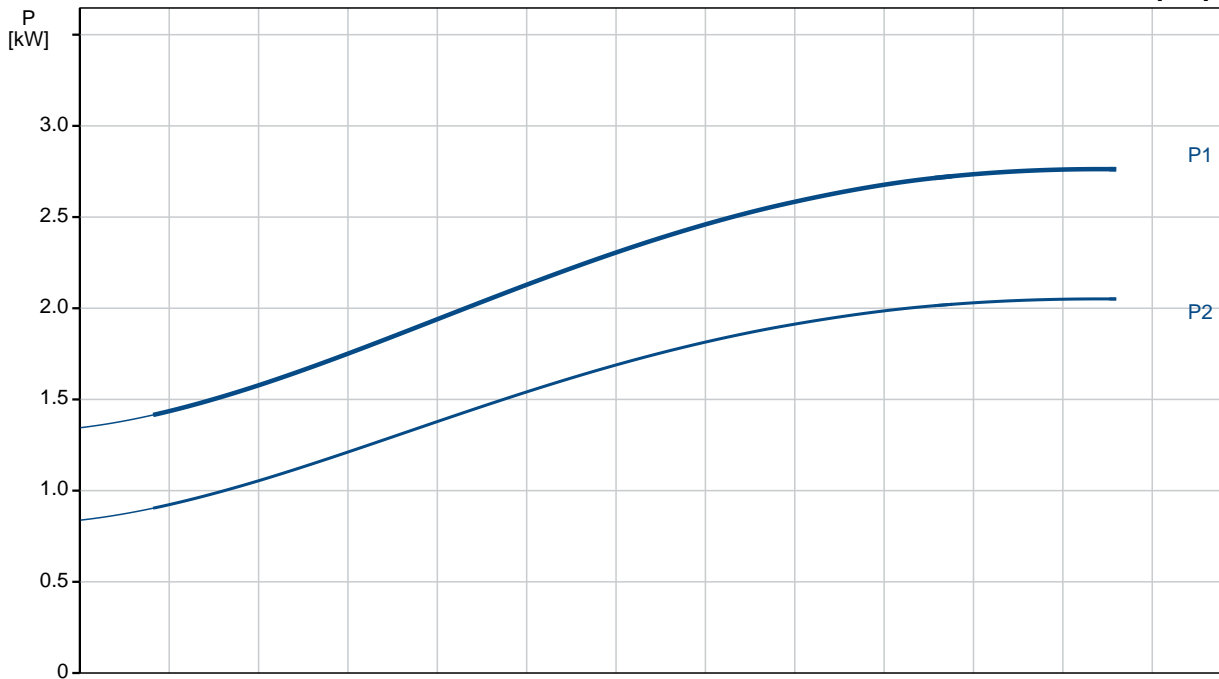
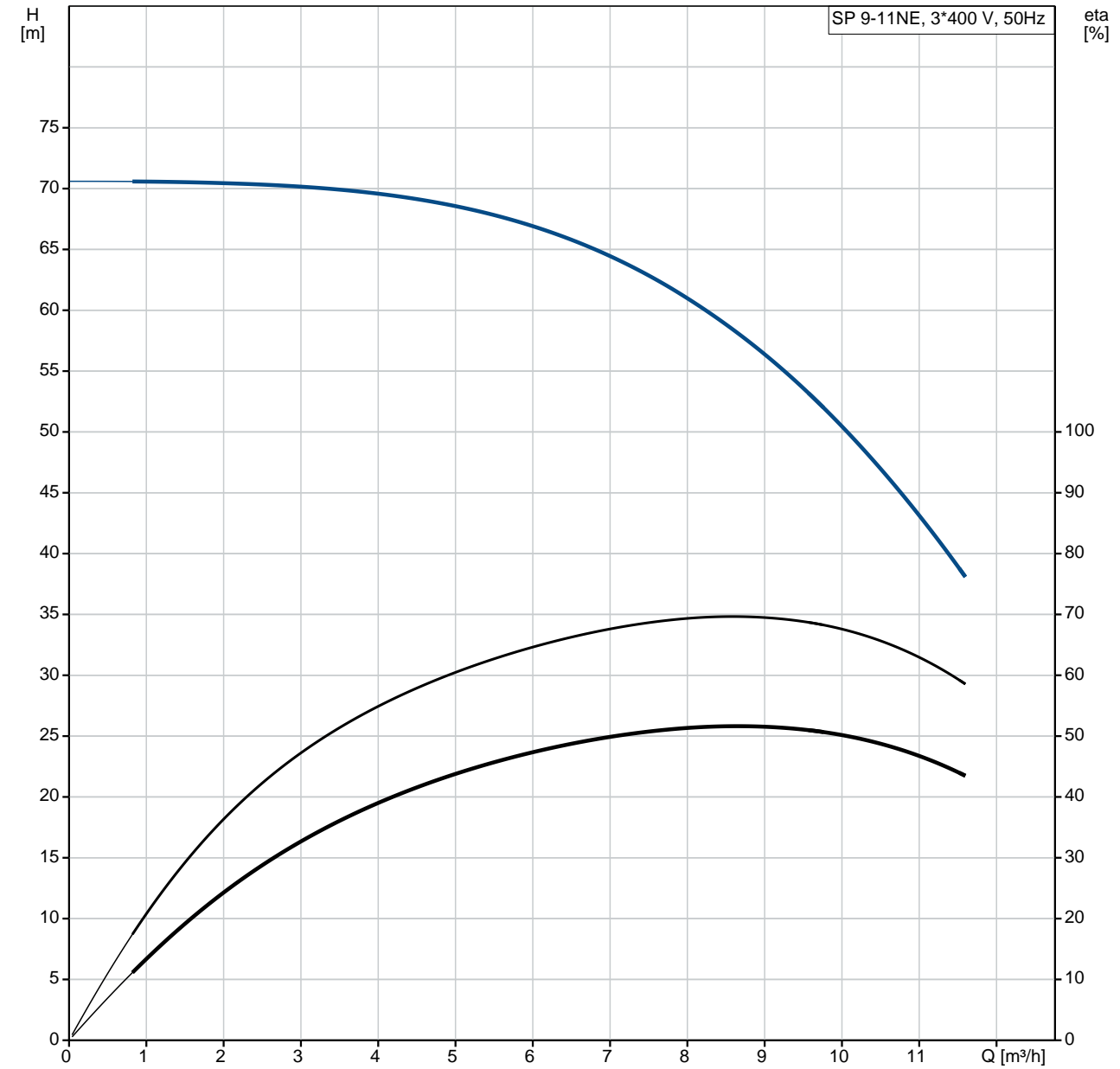
tel. +31 152 610 900

fax. +31 152 616 289

Position	Qty.	Description
	1	<p data-bbox="322 163 446 194"><b>SP 9-11NE</b></p>  <p data-bbox="711 595 1193 622"><b>Note! Product picture may differ from actual product</b></p> <p data-bbox="322 627 1439 707">Product No.: On request Multi-stage submersible pump for raw water supply, groundwater lowering and pressure boosting. The pump is suitable for pumping clean, thin, non-aggressive liquids without solid particles or fibres.</p> <p data-bbox="322 743 1066 770">The pump is made entirely of Stainless steel DIN W.-Nr. EN 1.4401.</p> <p data-bbox="322 801 1388 855">The motor is a 3-phase motor with sand shield, liquid-lubricated bearings and pressure equalizing diaphragm.</p> <p data-bbox="322 891 405 918"><b>Liquid:</b></p> <p data-bbox="322 922 817 1070">Pumped liquid: Water Maximum liquid temperature: 90 °C Max liquid t at 0.15 m/sec: 40 °C Liquid temperature during operation: 20 °C Density: 998.2 kg/m<sup>3</sup></p> <p data-bbox="322 1102 443 1128"><b>Technical:</b></p> <p data-bbox="322 1133 880 1249">Rated flow: 9 m<sup>3</sup>/h Rated head: 57.5 m Shaft seal for motor: SIC/SIC Curve tolerance: ISO9906:2012 3B</p> <p data-bbox="322 1281 437 1308"><b>Materials:</b></p> <p data-bbox="322 1312 890 1572">Pump: Stainless steel EN 1.4401 Pump housing: ASTM AISI 316 Impeller: Stainless steel EN 1.4401 ASTM AISI 316 Motor: Stainless steel DIN W.-Nr. 1.4539 AISI 904 L</p> <p data-bbox="322 1603 459 1630"><b>Installation:</b></p> <p data-bbox="322 1635 753 1693">Pump outlet: Rp Motor diameter: 4 inch</p> <p data-bbox="322 1724 497 1751"><b>Electrical data:</b></p> <p data-bbox="322 1756 919 2105">Motor type: MS4000 Rated power - P2: 2.2 kW Mains frequency: 50 Hz Rated voltage: 3 x 380-400-415 V Rated current: 5.75-6.00-6.30 A Starting current: 440-450-450 % Cos phi - power factor: 0.82-0.76-0.71 Rated speed: 2840-2860-2870 rpm Start. method: direct-on-line Enclosure class (IEC 34-5): IP68 Insulation class (IEC 85): F Built-in temp. transmitter: no</p>

Position	Qty.	Description
		<p>Windings: Enamelled</p> <p><b>Others:</b>  Minimum efficiency index, MEI : 0.70  Net weight: 25.7 kg  Gross weight: 27.7 kg  Shipping volume: 0.021 m<sup>3</sup>  Danish VVS No.: 388461311</p>

# On request SP 9-11NE 50 Hz



Description	Value
-------------	-------

**General information:**

Product name: SP 9-11NE  
 Product No: On request  
 EAN number: On request

**Technical:**

Rated flow: 9 m³/h  
 Rated head: 57.5 m  
 Stages: 11  
 Impeller reduc.: NONE  
 Shaft seal for motor: SIC/SIC  
 Curve tolerance: ISO9906:2012 3B  
 Model: A

**Materials:**

Pump: Stainless steel  
 EN 1.4401  
 Pump housing: ASTM AISI 316  
 Impeller: Stainless steel  
 EN 1.4401  
 ASTM AISI 316  
 Motor: Stainless steel  
 DIN W.-Nr. 1.4539  
 AISI 904 L

**Installation:**

Pump outlet: Rp  
 Motor diameter: 4 inch

**Liquid:**

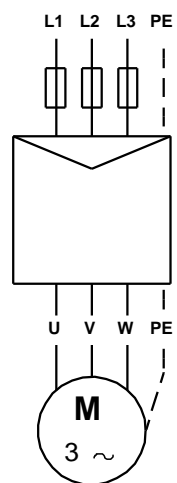
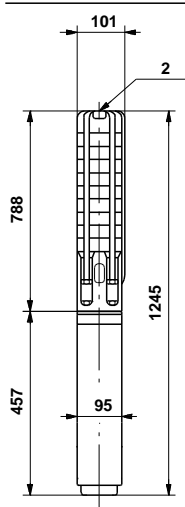
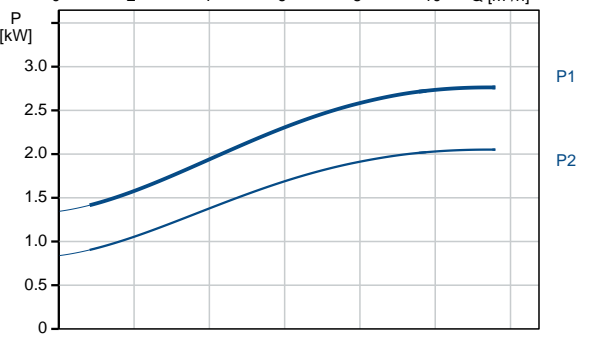
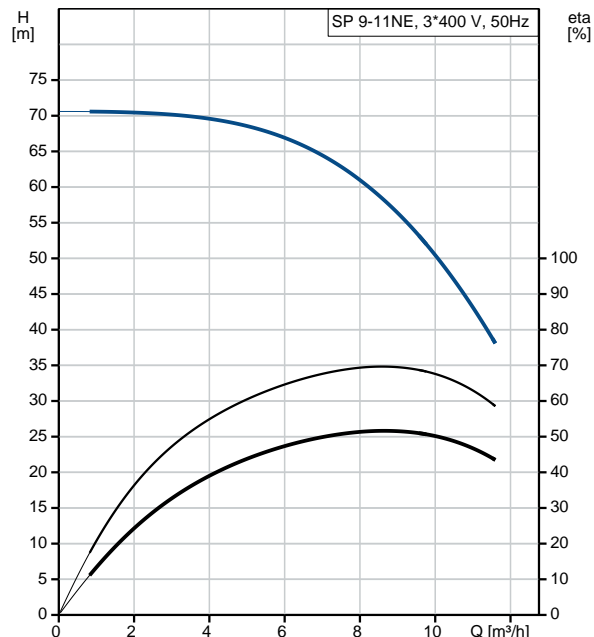
Pumped liquid: Water  
 Maximum liquid temperature: 90 °C  
 Max liquid t at 0.15 m/sec: 40 °C  
 Liquid temperature during operation: 20 °C  
 Density: 998.2 kg/m³

**Electrical data:**

Motor type: MS4000  
 Rated power - P2: 2.2 kW  
 Mains frequency: 50 Hz  
 Rated voltage: 3 x 380-400-415 V  
 Rated current: 5.75-6.00-6.30 A  
 Starting current: 440-450-450 %  
 Cos phi - power factor: 0.82-0.76-0.71  
 Rated speed: 2840-2860-2870 rpm  
 Start. method: direct-on-line  
 Enclosure class (IEC 34-5): IP68  
 Insulation class (IEC 85): F  
 Motor protec: NONE  
 Thermal protec: external  
 Built-in temp. transmitter: no  
 Motor No: 79194407  
 Windings: Enamelled

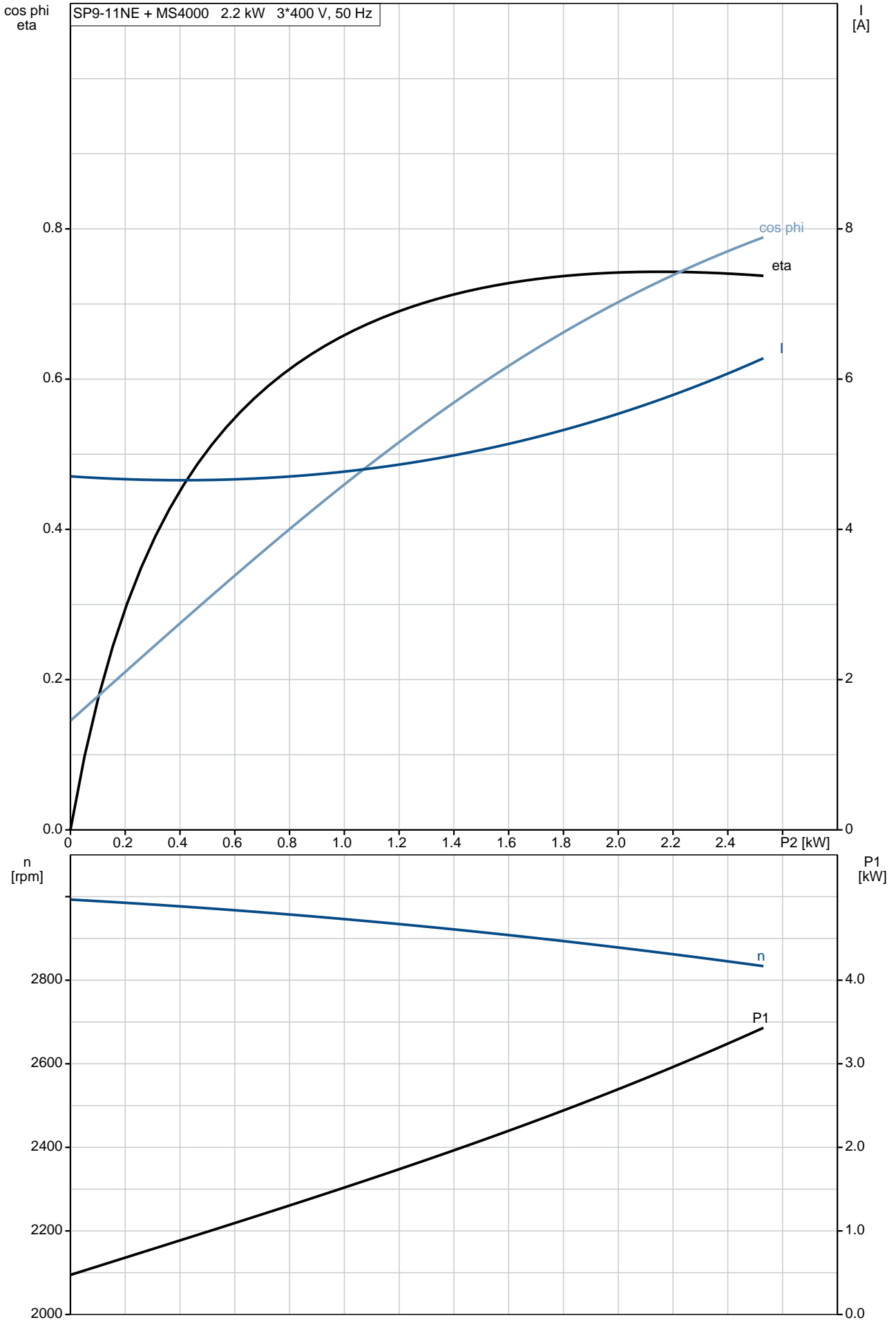
**Others:**

Minimum efficiency index, MEI : 0.70  
 Net weight: 25.7 kg  
 Gross weight: 27.7 kg  
 Shipping volume: 0.021 m³  
 Danish VVS No.: 388461311

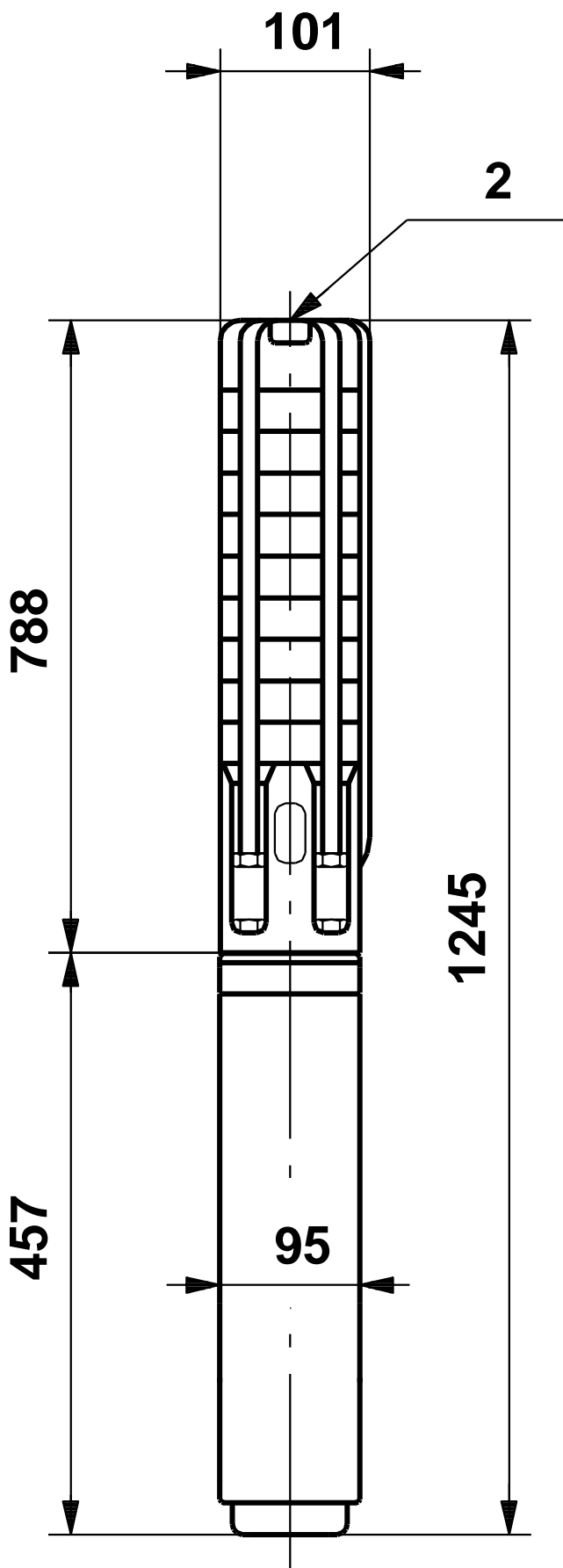


# On request SP 9-11NE 50 Hz

SP9-11NE + MS4000 2.2 kW 3\*400 V, 50 Hz

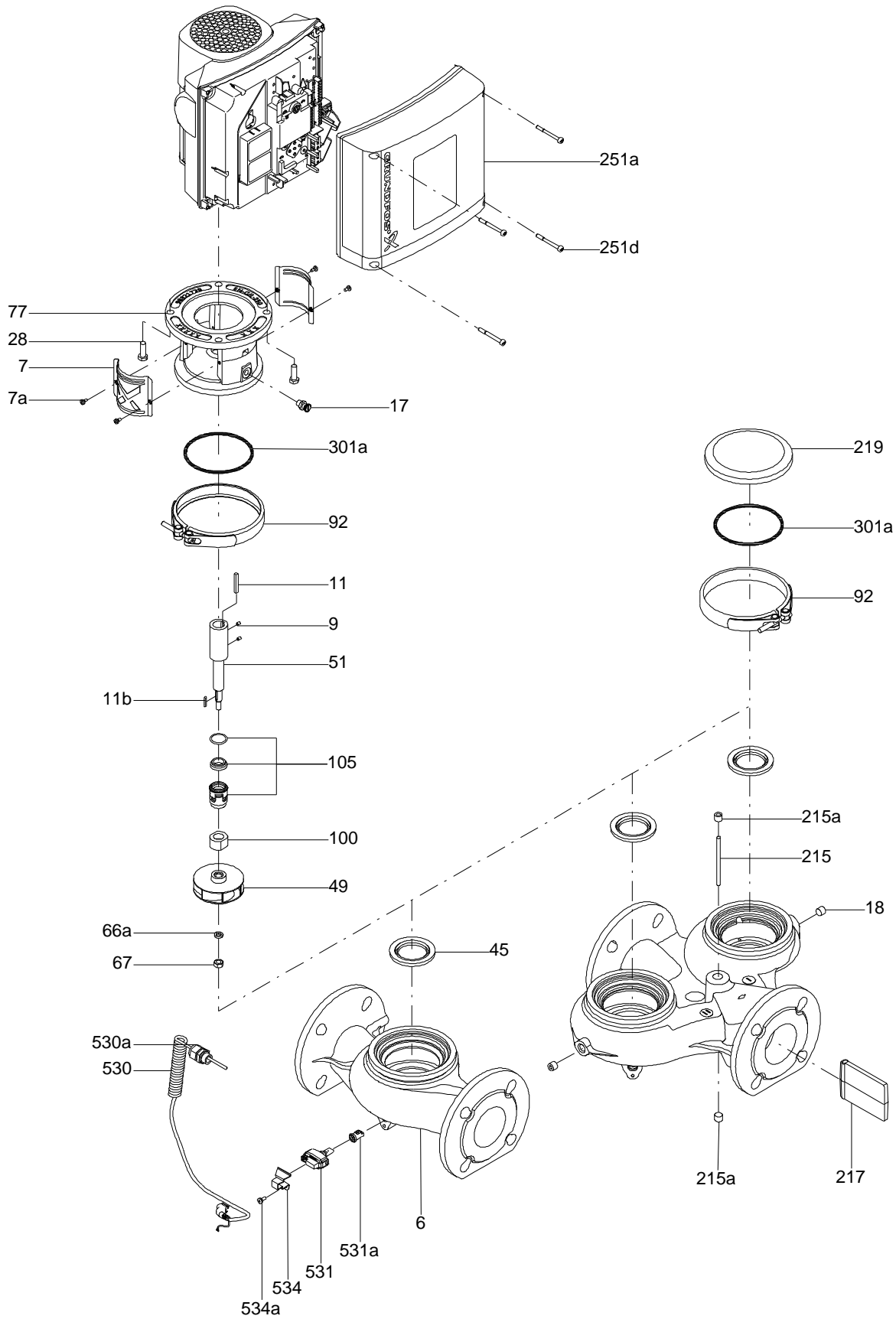


On request SP 9-11NE 50 Hz



Note! All units are in [mm] unless others are stated.  
Disclaimer: This simplified dimensional drawing does not show all details.

**Exploded view**



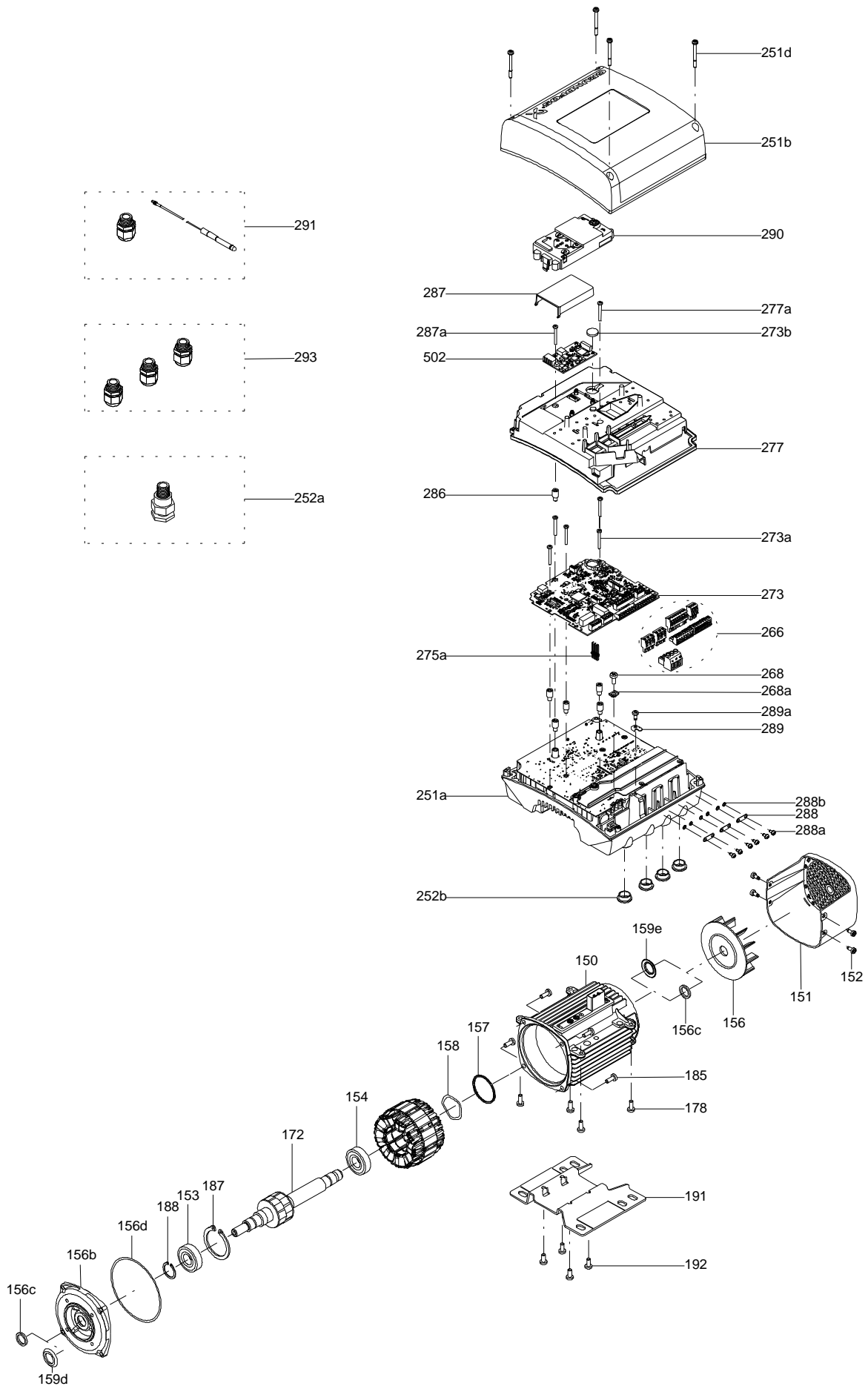


Sectional drawing (TM058200 for TPE2,TPE3)



TM058200

Exploded view ( TM057026 for MGE model H/I )



*Disclaimer: The information about the Grundfos pump in this document may be outdated.*

*Data may be subject to alterations without further notice.*

*Please contact us to verify the data above is still accurate/up-to-date.*

All information is copyright Grundfos.



[info@lenntech.com](mailto:info@lenntech.com)

<https://www.lenntech.com>

tel. +31 152 610 900

fax. +31 152 616 289